

VERONA

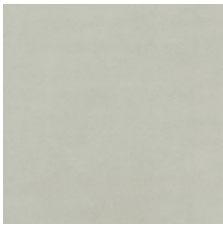
—
A sophisticated leather
with a beautiful lustre that
is enhanced with age



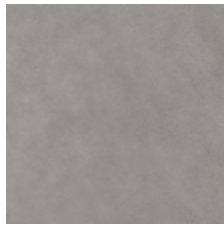
INSTYLE

VERONA

CONTEMPORARY LEATHERS



VERONA Glint



VERONA Cirrus



VERONA Ashen



VERONA Ravel



VERONA Blackbutt



VERONA Porcelain



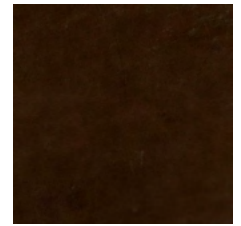
VERONA Pebble



VERONA Moss



VERONA Spinifex



VERONA Bronze



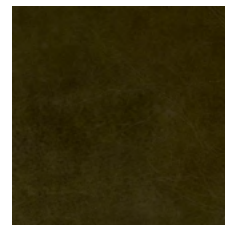
VERONA Tarragon



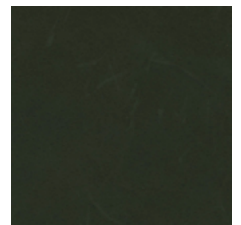
VERONA Wasabi



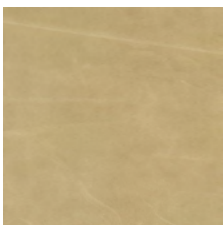
VERONA Peat



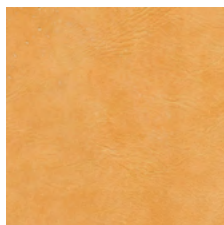
VERONA Mimosa



VERONA Greenstone



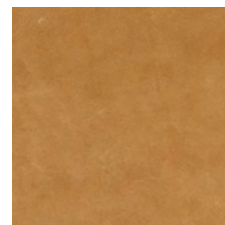
VERONA Doe



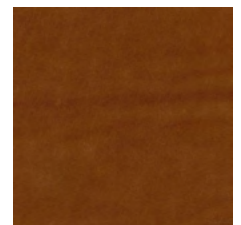
VERONA Butterscotch



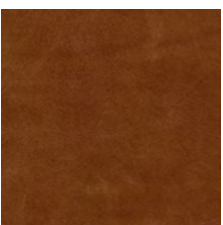
VERONA Nectar



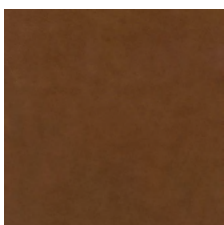
VERONA Walnut



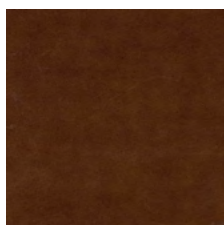
VERONA Nutmeg



VERONA Chestnut



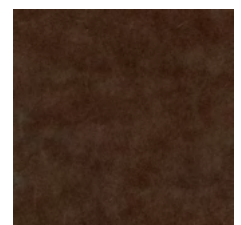
VERONA Gaia



VERONA Sepia



VERONA Toast



VERONA Aniseed

Leather may vary in colour due to the nature of the media
Please refer to website for current colour range

VERONA

CONTEMPORARY LEATHERS



VERONA Saffron



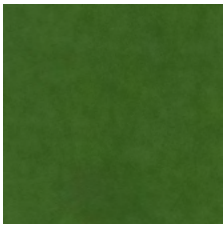
VERONA Rosewood



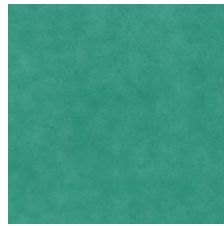
VERONA Elderberry



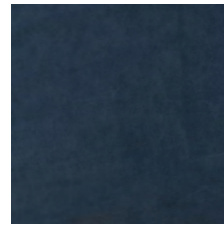
VERONA Juniper



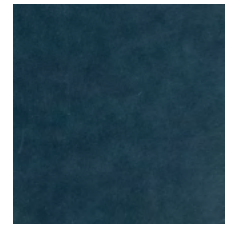
VERONA Lawn



VERONA Lagoon




VERONA Pura



VERONA Adriatic

Leather may vary in colour due to the nature of the media
Please refer to website for current colour range



AVERAGE HIDE SIZE	6 sqm approx.	
THICKNESS	1 - 1.2mm	
WEIGHT	735gsm approx.	
LEATHER TYPE	Pure Aniline 	
COLOURFASTNESS TO-AND-FRO RUBBING EN ISO 11640 + 11641	Dry 5 Wet 4-5 Perspiration 5	
LIGHTFASTNESS EN ISO 105-B02	3	
pH AND ΔpH EN ISO 4045	pH 3.8 ΔpH 0.41	
TEAR STRENGTH EN ISO 3377-1	32 N	
FIRE RATINGS AS/NZS 1530.3	Ignitability	14
	Spread of Flame	0
	Heat Evolved	1
	Smoke Developed	3
AS/NZS 3837	BCA Group 1 Av. Specific Extinction Area 129 m2/kg	
IMO Resolution A.652(16)	Sections 8.2 + 8.3: Pass	
APPLICATION	Upholstery seating, wall panels + curtains for commercial, residential + hospitality applications	

PLEASE NOTE

Pure-Aniline leathers are made from the finest raw hides. The natural characteristics such as insect bites, fat wrinkles, growth marks and healed scars can still be visible, a sign of a superior natural leather with its own individuality. Pure-Aniline leathers do not have any protective coating or pigment on the surface and are therefore more susceptible to fading from sunlight exposure. Care should be taken in high-traffic areas where food and drink spillages could stain the leather.

CARE

Leather Care for Aniline Leathers is available from our website

SEATING COMFORT RATING



A rating to determine a leather's seating comfort based upon the leather's ability to breathe and absorb moisture. Tested to ASTM E 96 M-05. VERONA achieves an Excellent Seating Comfort rating.



CERTIFICATIONS + STANDARDS

- Leather Working Group Gold certified
- Environmental Management System ISO 14001:2015 certified
- Low VOC
- Compliant with the European IPPC BAT for Tanning of Hides + Skins

ENERGY + EMISSIONS

- Production facility uses 30% renewable energy
- Meets Leather Working Group’s strict criteria for air, water + noise emissions

WATER + CHEMICALS

- No Substances of Very High Concern (SVHC) are used
- Leather Working Group aligns with ZDHC + AFIRM Group chemical management objectives
- Finishing is carried out using exclusively water-based conditioning systems
- 100% non-potable water used + water reduction measures in place

CIRCULARITY + LIFECYCLE

- Leather is a by-product of the food industry
- Leather is naturally durable, longlasting + reusable
- All Contemporary Leathers can be accepted for takeback as part of our REVIVE® Product Stewardship Scheme

TRACEABILITY

- 90% of materials are traceable through chain of custody or physical marking

LAND USE + BIODIVERSITY

- All Contemporary Leathers are sourced from European locations which are free from deforestation risk
- European Union animal welfare law adheres to the requirements of the ‘Five Freedoms’

SOCIAL IMPACT

- Leather Working Group conducts social audits and assesses health, safety + emergency preparedness

GREEN STAR

- VERONA can contribute low VOC points
- VERONA can contribute ISO 14001 points
- VERONA can be used on white furniture certified to Ecospecifier, AFRDI, ECNZ and GECA
- The Green Star Rating Tool states “Where at least 90% of an item’s mass is certified to a GBCA recognised standard, the item can be entered as a certified product at Level A, B or C.” Therefore any leather can be used as leathers are almost always under 10% by weight of a furniture item.

LEED

- VERONA can contribute low VOC points
- VERONA can contribute Extended Producer Responsibility points through Instyle’s REVIVE® Product Stewardship Scheme

WELL

- VERONA can contribute Low VOC / VOC Reduction
- Toxic Material Reduction: VERONA is free of PFCs, flame retardants, phthalates + urea formaldehyde

