



ZEN

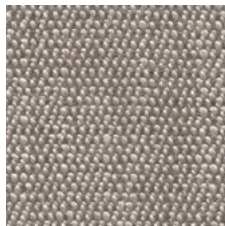
—
An understated two-tone
fabric texture with a
beautiful soft handle

INSTYLE

ZEN



ZEN Quest



ZEN Tapestry



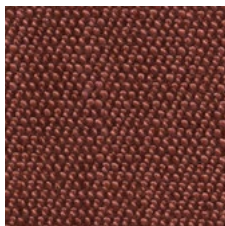
ZEN Bristle



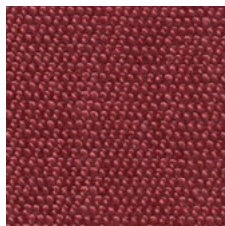
ZEN Raku



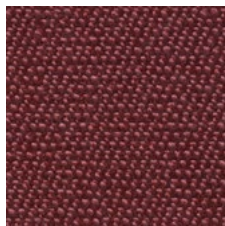
ZEN Chord



ZEN Incense



ZEN Rosetta



ZEN Act



ZEN Kindle



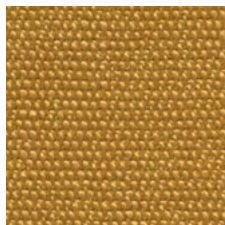
ZEN Orchid



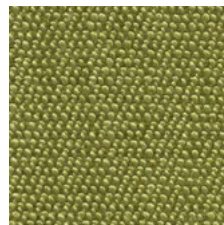
ZEN Henna



ZEN Perform



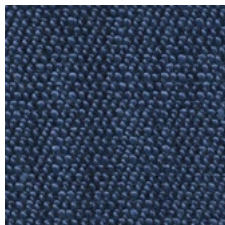
ZEN Stellar



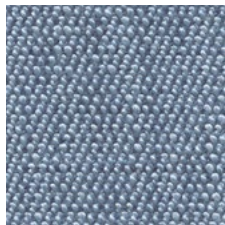
ZEN Jester



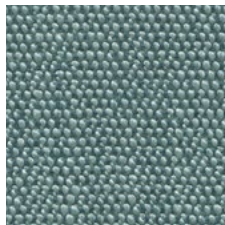
ZEN Greengrass



ZEN Uncharted



ZEN Distant



ZEN Coastal



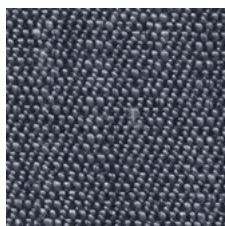
ZEN Maze



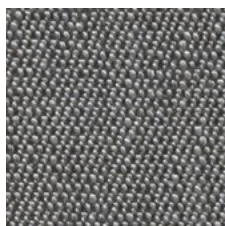
ZEN Hawkesbury



ZEN Lyrical



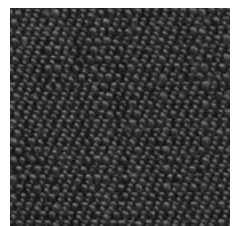
ZEN Experience



ZEN Windfall



ZEN Yonder



ZEN Forge

Product may vary in colour due to the nature of the media
Patterns shown are not to scale
Please refer to website for current colour range



COMPOSITION	90% polyester, 10% viscose
WIDTH	137cm
WEIGHT	650gsm
PATTERN REPEAT	nil
ROLL SIZE	30m approx.
CARE CODE	CTA 1
ABRASION Martindale AS2001.2.25	90,000
CTA RATING	<div> <div>hc</div> <div>HEAVY DUTY COMMERCIAL USE</div> </div>
SEAM SLIPPAGE AS2001.2.22	Warp 3.3mm Weft 3.2mm Note: All seams must be overlapped or secured to prevent the premature failure of the seam due to fraying
PILLING Martindale IWS196	4/5
LIGHTFASTNESS ISO 105/B02	5
FIRE RATINGS AS/NZS 1530.3	Ignitability 10 Spread of Flame 0 Heat Evolved 3 Smoke Developed 5
AS/NZS 3837 (AS 5637.1)	BCA Group 2 Av. Specific Extinction Area 224.8m ² /kg
ISO 5660.1	NZBC Group 2S Av. Specific Extinction Area 169m ² /kg
APPLICATION	upholstery seating, screens, wall panels
PLEASE NOTE	Results from performance tests are guidelines only

ENVIRONMENT

- Low VOC certified

GREEN STAR

ZEN can contribute points to the following Green Star criteria:

- Low-VOC
- ZEN can be used on white furniture certified to Ecospecifier, AFRDI, ECNZ and GECA. The Green Star Rating Tool states "Where at least 90% of an item's mass is certified to a GBCA recognised standard, the item can be entered as a certified product at Level A, B or C." Therefore any fabric can be used as fabrics are almost always under 10% by weight of a furniture item

LEED

ZEN can contribute points to the following LEED criteria:

- Low-VOC

WELL

ZEN can contribute to the following WELL criteria:

- Low VOC / VOC Reduction
- Toxic Material Reduction: ZEN is free of PFCs, flame retardants, phthalates + urea formaldehyde