

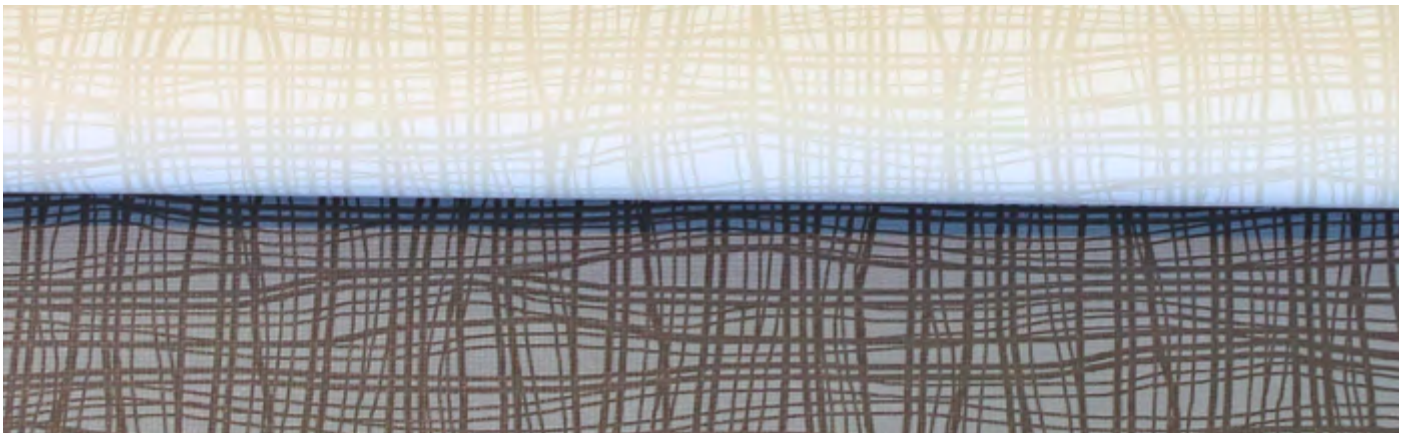
SWITCH

—

A high performance vinyl
with a contemporary linear
texture



INSTYLE



COMPOSITION	85% PVC, 15% polyester + Resilience	
WIDTH / ROLL SIZE	137cm / 27.4m approx	
WEIGHT	639gsm	
PATTERN REPEAT	H 26.7cm V 25.4cm	
CARE CODE	V1	
ABRASION		
Martindale AS2001.2.25	>100,000	
Wyzenbeek ASTM 4157	>350,000	
LIGHTFASTNESS	>6	
ISO 105-B02		
TEARING FORCE	Length 87.5N Width 44N	
AS2001.2.10		
UV RESISTANCE	>500 hours	
AATCC 16-2004, Option 3		
ADDITIONAL RESULTS	Blocking Resistance AS4878.11 Resistance to Flex Cracking AS4878.9 Tensile Strength AS4878.6 Elongation + Stretch Set AS1441.9 Loss of Plasticiser AS1441.8	
FIRE RATINGS		
AS/NZS 1530.3	Ignitability	16
	Spread of Flame	0
	Heat Evolved	1
	Smoke Developed	5
Additional Fire Tests	MVSS 302, NFPA 260 California Bulletin 117 E	
APPLICATION	Indoor upholstery, banquette seating, bedheads, screens for healthcare, hospitality, office, public building, education, automotive + residential	
PLEASE NOTE	Results from performance tests are guidelines only	

PERFORMANCE

- **Permanent Stain Protection:** The Resilience finish guards against most stains. Most stains can simply be wiped away using mild soap and water
- **Waterproof + Water Resistant**
- **Abrasion Resistance:** Resilience provides additional wear properties and surface durability, thereby increasing the life of the material. SWITCH is able to withstand wear and tear in high demanding situations
- **Easy to Clean + Bleach Cleanable:** Easily cleaned with mild soap and water. Can be easily disinfected using one part bleach and ten parts water
- **Superior Lightfastness:** Achieves 500 hours light fastness

ENVIRONMENT

- Free of phthalates, flame retardant + anti-bacterial additives (ADF); lead, BPA, TRIS + formaldehyde
- Does not contain conflict minerals
- Reduced energy and water use, recycling of waste + solution-dyed product
- Meets the environmental, health and safety standards set by California Prop 65, CPSIA + REACH

GREEN STAR

- SWITCH can be used on white furniture certified to Ecospecifier, AFRDI, ECNZ and GECA.
- The Green Star Rating Tool states “Where at least 90% of an item’s mass is certified to a GBCA recognised standard, the item can be entered as a certified product at Level A, B or C.” Therefore any fabric can be used as fabrics are almost always under 10% by weight of a furniture item.

WELL

- SWITCH can contribute to WELL Toxic Material Reduction criterion as it is free of PFCs, flame retardants, phthalates and urea formaldehyde