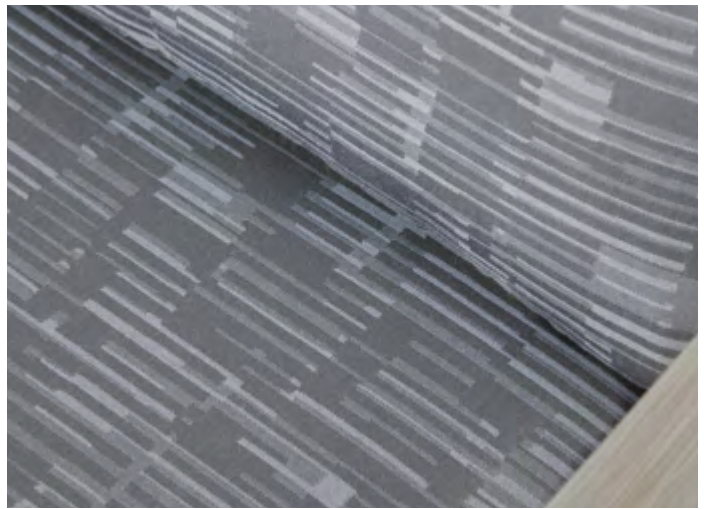
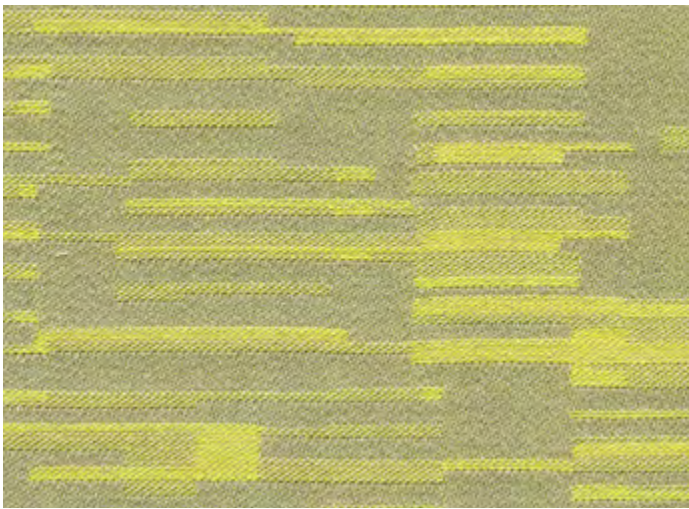


PRESS

A subtle linear and tonal
LIFE Textiles® pattern
inspired by light and shadow

INSTYLE



COMPOSITION	100% Australian worsted EthEco® wool
WIDTH / ROLL SIZE	137cm / 50m approx.
WEIGHT	340gsm
PATTERN REPEAT	H 35.3cm V 53.7cm
CARE CODE	CTA 1
ABRASION	
Wyzenbeek ASTM 4157	95,000 double rubs
Martindale AS2001.2.25	40,250
CTA RATING	hc HEAVY DUTY COMMERCIAL USE
SEAM SLIPPAGE	Warp 5.0mm Weft 4.5mm
AS2001.2.22	Note: All seams must be overlocked or secured to prevent the premature failure of the seam due to fraying
PILLING	4-5
Martindale IWS196	
LIGHTFASTNESS	> 5
ISO 105-B02	
FIRE RATINGS	
AS/NZS 1530.3	Ignitability 12
	Spread of Flame 0
	Heat Evolved 0
	Smoke Developed 4
AS/NZS 3837	BCA Group 2
	Av. Specific Extinction Area 85.9m2/kg
IMO A.652(16)	Sections 8.2 + 8.3: Pass
Additional Fire Tests	California Bulletin 117 E, ASTM E-84
APPLICATION	upholstery, screens

ENVIRONMENT

- 100% sustainable, rapidly renewable content: EthEco® wool is sourced from non-mulesed sheep cared for on holistically-managed farms.
- Environmentally Improved Production Process: Manufactured to strict environmental criteria, reduced water and energy use, reuse of water (30%), recycling of waste, no hazardous substances.
- Wool absorbs indoor air contaminants, benefiting indoor air quality.
- Certified as low-VOC. Test certificate available on request.
- 100% biodegradable and recyclable

GREEN STAR + LEED

- PRESS is certified to the EU Ecolabel.
- PRESS can be used on white furniture certified to Ecospecifier, AFRDI, ECNZ and GECA.
- The Green Star Rating Tool states “Where at least 90% of an item’s mass is certified to a GBCA recognised standard, the item can be entered as a certified product at Level A, B or C.” Therefore any fabric can be used as fabrics are almost always under 10% by weight of a furniture item.
- 100% rapidly renewable content contributes to LEED MR Credit 6 Rapidly Renewable Materials.



EU Ecolabel: UK/16/009

