

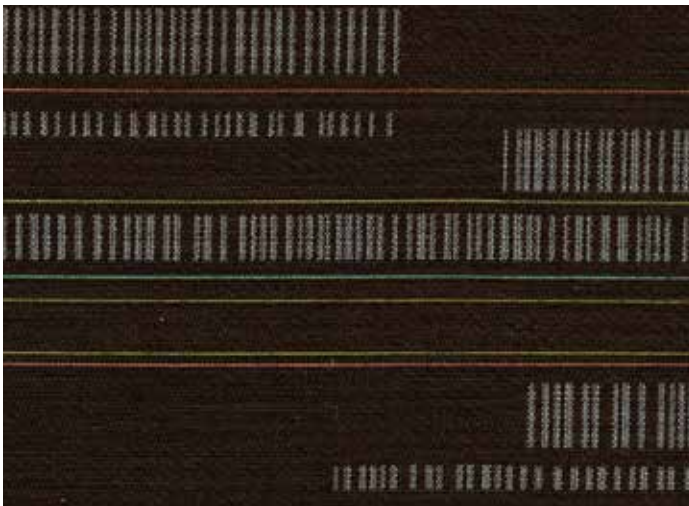
CIRCUIT

A sophisticated and clever fine stripe pattern from the Kinetic collection.



INSTYLE

CIRCUIT



COMPOSITION	46% nylon, 34% wool, 17% post-consumer recycled polyester, 3% cotton	
WIDTH / WEIGHT	137cm / 260gsm	
PATTERN REPEAT	H 23.5cm V 34.2cm	
ROLL SIZE	55m approx.	
CARE CODE	CTA 1	
ABRASION		
Wyzenbeek ASTM 4157	100,000 double rubs	
Martindale AS2001.2.25	100,000	
CTA RATING	<div> <div>hc</div> <div>HEAVY DUTY COMMERCIAL USE</div> </div>	
SEAM SLIPPAGE AS2001.2.22	Warp 3.2mm Weft 2.3mm Note: All seams must be overlocked or secured to prevent the premature failure of the seam due to fraying	
PILLING Martindale IWS196	5	
LIGHTFASTNESS ISO 105 B02	6	
FIRE RATINGS AS/NZS 1530.3	Ignitability	9
	Spread of Flame	0
	Heat Evolved	2
	Smoke Developed	4
AS/NZS 3837 (Cone Calorimeter)	BCA Group 2	
	Av. Specific Extinction Area	
	202.3 m ² /kg	
APPLICATION	upholstery, screens, wall panels	

ENVIRONMENT

- 37% rapidly renewable content (wool and cotton).
- 17% post-consumer recycled content (polyester).
- Environmentally Improved Production Process: reduced energy consumption, reuse and recycling of waste, and use of environmentally optimised dyes.
- Cotton and wool absorb prevalent indoor air contaminants therefore benefiting indoor air quality.
- Reusable and 37% biodegradable (natural fibre content).

GREEN STAR + LEED

- CIRCUIT can be used on white furniture certified to Ecospecifier, AFRDI, GECA and ECNZ.
- The Green Star Rating Tool states “Where at least 90% of an item’s mass is certified to a GBCA recognised standard, the item can be entered as a certified product at Level A, B or C.” Therefore any fabric can be used as fabrics are almost always under 10% by weight of a furniture item.
- 37% rapidly renewable content contributes to LEED MR Credit 6 Rapidly Renewable Materials.
- 17% post consumer content contributes to LEED MR Credit 4 Recycled Content.

PATTERN REPEAT

