

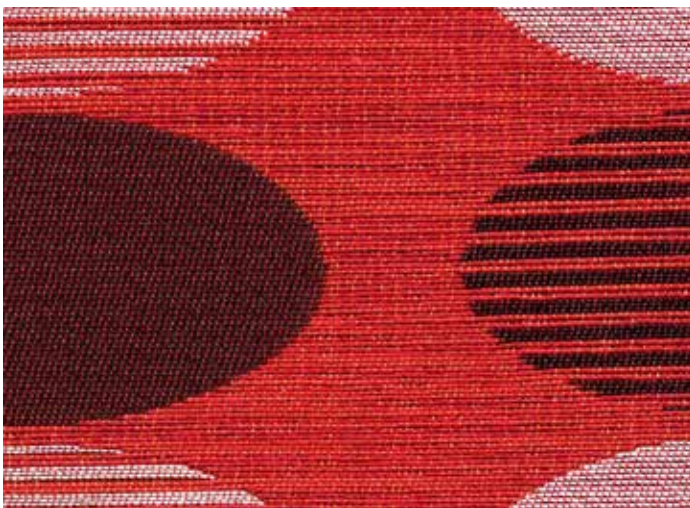
BOUNCE


A refined playful oval pattern from the Kinetic collection.



INSTYLE

BOUNCE



COMPOSITION	66% cotton, 25% nylon, 9% post-consumer recycled polyester	
WIDTH / WEIGHT	137cm / 404gsm	
PATTERN REPEAT	H 23.4cm V 27.9cm	
ROLL SIZE	55m approx.	
CARE CODE	CTA 1	
ABRASION	Martindale AS2001.2.25 >60,000 Wyzenbeek ASTM 4157 100,000 double rubs	
CTA RATING	 HEAVY DUTY COMMERCIAL USE	
SEAM SLIPPAGE	Warp 3.5mm Weft 2.0mm AS2001.2.22 Note: All seams must be overlapped or secured to prevent the premature failure of the seam due to fraying	
PILLING	5 Martindale IWS196	
LIGHTFASTNESS	6 ISO 105 B02	
FIRE RATINGS	AS/NZS 1530.3	Ignitability 11 Spread of Flame 0 Heat Evolved 2 Smoke Developed 4
AS/NZS 3837 (Cone Calorimeter)	BCA Group 2 Av. Specific Extinction Area 81.8m ² /kg	
APPLICATION	upholstery, screens, wall panelling	

ENVIRONMENT

- 66% rapidly renewable content (cotton).
- 9% post-consumer recycled content (polyester).
- Environmentally Improved Production Process: reduced energy consumption, reuse and recycling of waste, and use of environmentally optimised dyes.
- Cotton absorbs prevalent indoor air contaminants therefore benefiting indoor air quality.
- Reusable and 66% biodegradable (natural fibre content).

GREEN STAR + LEED

- BOUNCE can be used on white furniture certified to Ecospecifier, AFRDI, GECA and ECNZ.
- The Green Star Rating Tool states "Where at least 90% of an item's mass is certified to a GBCA recognised standard, the item can be entered as a certified product at Level A, B or C." Therefore any fabric can be used as fabrics are almost always under 10% by weight of a furniture item.
- 66% rapidly renewable content contributes to LEED MR Credit 6 Rapidly Renewable Materials.
- 9% post consumer content contributes to LEED MR Credit 4 Recycled Content.

PATTERN REPEAT

