



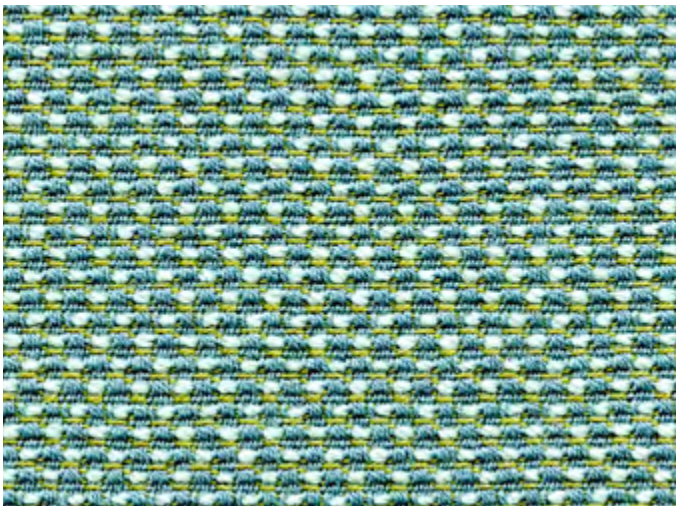
# BALANCE

---

A classic rich and warm  
texture from the LIFE  
Textiles® collection

INSTYLE





COMPOSITION	75% Australian EthEco® wool, 25% New Zealand eco wool™	
WIDTH / WEIGHT	137cm / 545gsm	
PATTERN REPEAT	H 0.6cm V 0.6cm	
ROLL SIZE	43m approx.	
CARE CODE	CTA 1	
ABRASION Martindale AS2001.2.25	50,000	
CTA RATING	<div> <div>hc</div> <div>HEAVY DUTY COMMERCIAL USE</div> </div>	
SEAM SLIPPAGE AS2001.2.22	Warp 7.2mm Weft 5.0mm Note: All seams must be overlocked or secured to prevent the premature failure of the seam due to fraying	
PILLING Martindale IWS196	3 - 4	
LIGHTFASTNESS AS 2001.4.21	>5	
FIRE RATINGS AS/NZS 1530.3	Ignitability	0
	Spread of Flame	0
	Heat Evolved	0
	Smoke Developed	5
AS/NZS 3837	BCA Group 2	
	Av. Specific Extinction Area	91.9m2/kg
IMO Resolution A.625(16)	Sections 8.2 + 8.3: PASS	
Additional Fire Tests	California 117E, ASTM E84	
APPLICATION	upholstery, screens, wall panels	

## ENVIRONMENT

- 100% sustainable, rapidly renewable content: EthEco® wool is sourced from non-mulesed sheep cared for on holistic-managed farms. eco wool™ has low pesticide residues
- Environmentally Improved Production Process: Manufactured to strict environmental criteria, reduced water (6% savings) and energy consumption, non-potable water supply (100% rain and ground water), recycling of waste, use of metal-free dyes
- Manufacturer has a certified EMS (Enviro-Mark Diamond)
- Wool absorbs indoor air contaminants, benefiting indoor air quality
- Certified as low-VOC. Test certificate available on request
- 100% biodegradable and recyclable through INSTYLE's Revive® program

## GREEN STAR + LEED

- BALANCE is certified to the EU Ecolabel
- BALANCE can be used on white and upholstered furniture certified by AFRDI, GECA, Ecospecifier (Level B + C) and ECNZ
- The Green Star Rating Tool states "Where at least 90% of an item's mass is certified to a GBCA recognised standard, the item can be entered as a certified product at Level A, B or C". Therefore, any fabric can be used as fabrics are almost always under 10% by weight of a furniture item
- 100% rapidly renewable content contributes to LEED MR Credit 6 Rapidly Renewable Materials



EU Ecolabel: UK/16/009

