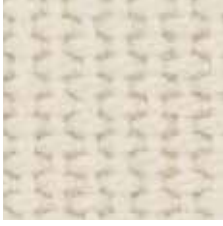


KINDRED

—
A beautiful sustainable
wool blend textile with an
exaggerated texture

INSTYLE

KINDRED



KINDRED Affinity



KINDRED Viewpoint



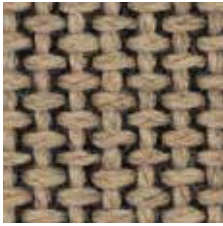
KINDRED Liaison



KINDRED Kind



KINDRED Belief



KINDRED Thoughts



KINDRED Ideal



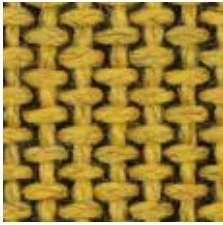
KINDRED Promise



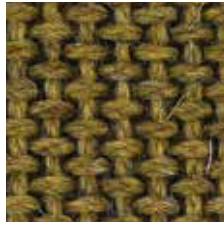
KINDRED Vitality



KINDRED Universe



KINDRED Zeal



KINDRED Relate



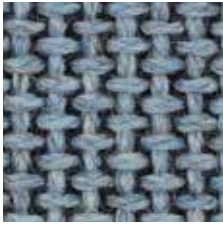
KINDRED Wellbeing



KINDRED Generation



KINDRED Mind



KINDRED Friend



KINDRED Imagination



KINDRED Connection



KINDRED Dimension



KINDRED Bond



KINDRED Soul



KINDRED Tribe

Product may vary in colour due to the nature of the media
Please refer to website for current colour range



COMPOSITION	65% wool, 24% cotton, 6% other fibres, 5% polyester	
WIDTH / WEIGHT	137cm / 690gsm	
PATTERN REPEAT	Nil	
ROLL SIZE	25m approx.	
CARE CODE	CTA 1	
ABRASION Martindale AS2001.2.25	50,000	
CTA RATING	<div style="display: flex; align-items: center;"> <div style="background-color: #333; color: white; padding: 5px; font-weight: bold; font-size: 1.2em; margin-right: 5px;">hc</div> <div> <p>HEAVY DUTY COMMERCIAL USE</p> </div> </div>	
SEAM SLIPPAGE AS2001.2.22	<p>Warp 4.5mm Weft 6mm</p> <p>Note: All seams must be overlocked or secured to prevent the premature failure of the seam due to fraying</p>	
PILLING Martindale IWS196	4-5	
LIGHTFASTNESS ISO 105 B02	>6	
FIRE RATINGS AS/NZS 1530.3	Ignitability	13
	Spread of Flame	0
	Heat Evolved	1
	Smoke Developed	4
AS/NZS 3837	BCA Group	2
	Av. Specific Extinction Area	54.2 m2/kg
ISO 5660.1	NZBC Group	3
	Av. Specific Extinction Area	15.4m ² /kg
APPLICATION	Upholstery seating, screen, wall panel	
PLEASE NOTE	Results from performance tests are guidelines only Interior products must be protected from direct heat + sunlight	

ENVIRONMENT

- 89% sustainable, rapidly renewable content
- Reduced water and energy consumption, recycling of waste
- Kindred is certified low VOC
- Wool absorbs indoor air contaminants, benefiting indoor air quality
- 80% biodegradable (natural fibre content) and recyclable

GREEN STAR

Kindred can contribute points to the following Green Star criteria:

- Stewardship Programs: Kindred can be reused or recycled through our Revive recycling program
- Low-VOC
- Kindred can be used on white furniture certified to Ecospecifier, AFRDI, ECNZ and GECA
- The Green Star Rating Tool states “Where at least 90% of an item’s mass is certified to a GBCA recognised standard, the item can be entered as a certified product at Level A, B or C.” Therefore any fabric can be used as fabrics are almost always under 10% by weight of a furniture item

LEED

Kindred can contribute points to the following LEED criteria:

- Bio-Based + Rapidly-Renewable Content (89%)
- Low-VOC
- Extended Producer Responsibility Recycling Program

WELL

Kindred can contribute to the following WELL criteria:

- Low VOC / VOC Reduction: Kindred is low VOC
- Toxic Material Reduction: Kindred is free of PFCs, flame retardants, phthalates and urea formaldehyde