



ARPORA

A high performance
wallcovering with a
subtle grasscloth texture

INSTYLE

ARPORA



Jasmine ARP020



Canscora ARP001



Carnation ARP022



Daylily ARP025



Brown Thistle ARP023



Kaliziri ARP003



Ginger ARP007



Hibiscus ARP024



Hydrangea ARP021



Alfalfa ARP028



Succulent ARP029



Velvet Bean ARP013



Chameleon ARP002



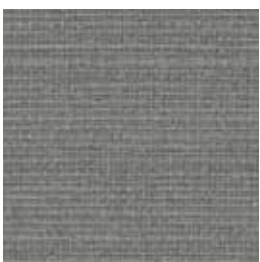
Thistle ARP006



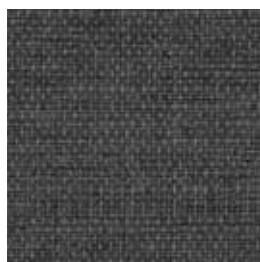
Silver Brunia ARP027



Catmint ARP008



Orchid ARP026



Costus ARP014



Bluethread ARP011



Larkspur ARP030

Patterns shown are not to scale
Product may vary in colour due to the nature of the media
Please refer to website for current colour range



FACE COMPOSITION	vinyl
BACKING TYPE	osnaburg
WIDTH	137cm
WEIGHT	453gsm / 620g lineal m
PATTERN REPEAT	non-match
ROLL SIZE	27.4m approx. Note: minimum order quantity is 10.9m and 0.9m multiples
PERFORMANCE	Type II Wallcovering
FIRE RATING AS/NZS 3837 AS 5637.1	BCA Group 2 Av. Specific Extinction Area 51.3 m2/kg
ISO 5660.1	NZBC Group 2S Av. Specific Extinction Area 5.2 m2/kg
Additional Fire Tests	ASTM E-84 Tunnel Test Class A
PLEASE NOTE	ARPORA is printed with a grasscloth woven texture to mimic a natural textile. A panel effect is expected and is not considered a defect.

PRODUCT INSTALLATION

- Refer to our detailed installation instructions for ARPORA supplied with each shipment before cutting or installing this wallcovering. A copy can also be downloaded from our website. Hang material in sequence as cut from the roll.

CARE + MAINTENANCE

- General maintenance can be achieved with periodic dusting or vacuuming with a soft brush attachment.
- Remove ordinary dirt and smudges with a mild soap and warm water solution.
- Avoid all solvent based cleaners.
- Always test the solution on an inconspicuous portion of the wallcovering before proceeding, checking that there is no adverse effect on finish, colour or gloss.
- Care should be taken on dark colours due to the possibility of causing 'light marks'. Always use a blotting action rather than rubbing to avoid abrasion.
- Rinse lightly with clean water and sponge.
- Deeply embossed wallcoverings need extra attention in case suds or loosened dirt lodge in depressed surfaces.
- Dry with a soft lint free cloth or towel.
- ARPORA care and maintenance instructions are available on our website.

WARRANTY

- For a period of 3 years from date of invoice this wallcovering is guaranteed to be first quality and free of manufacturing defects. This warranty applies only to professionally applied installations according to the recommended installation instructions, and proper care and maintenance using appropriate cleaning agents as outlined in the care and maintenance instructions.

