

FUSION



—

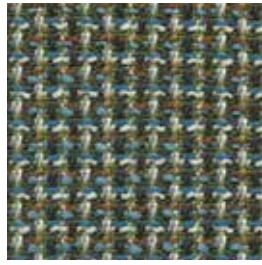
A classic upholstery fabric
with a multi-colour texture
from the sustainable LIFE
Textiles collection

INSTYLE

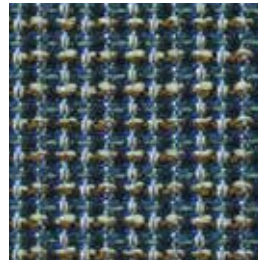
FUSION



FUSION Dynamic



FUSION Creative



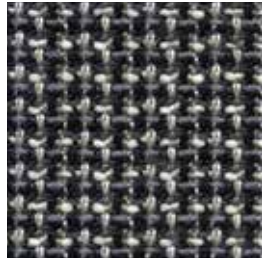
FUSION Eclectic



FUSION Combine



FUSION Mixture



FUSION Integrate

Patterns shown are not to scale
Product may vary in colour due to the nature of the media
Please refer to website for current colour range



COMPOSITION	74% Australian + New Zealand wool, 17% nylon, 9% polyester
WIDTH / WEIGHT	137cm / 550gsm
PATTERN REPEAT	Nil
ROLL SIZE	45m approx.
CARE CODE	CTA 1
ABRASION Martindale AS2001.2.25	148,750
CTA RATING	hc HEAVY DUTY COMMERCIAL USE
SEAM SLIPPAGE AS2001.2.22	Warp 4.4mm Weft 4.3mm Note: All seams must be overlocked or secured to prevent the premature failure of the seam due to fraying
PILLING Martindale IWS196	4-5
LIGHTFASTNESS ISO 105B08	6
FIRE RATINGS AS/NZS 1530.3	Ignitability 8 Spread of Flame 0 Heat Evolved 0 Smoke Developed 4
AS/NZS 3837 (AS 5637.1)	BCA Group 2 Av. Specific Extinction Area 91m ² /kg
ISO 5660.1	NZBC Group 2S
APPLICATION	Upholstery seating, screen, wall panel
ORIGIN	Made locally
PLEASE NOTE	Results from performance tests are guidelines only

ENVIRONMENT

- 74% sustainable, rapidly renewable wool content
- Reduced water (6% savings) and energy consumption, non-potable water supply (100% rain and ground water), recycling of waste
- Manufacturer has a certified EMS (Enviro-Mark Diamond)
- Fusion is certified low VOC
- Wool absorbs indoor air contaminants, benefiting indoor air quality
- 74% biodegradable (natural fibre content) and recyclable

GREEN STAR

Fusion can contribute points to the following Green Star criteria:

- Stewardship Programs: Fusion can be reused or recycled through our Revive recycling program
- Low-VOC
- Fusion can be used on white furniture certified to Ecospecifier, AFRDI, ECNZ and GECA
- The Green Star Rating Tool states “Where at least 90% of an item’s mass is certified to a GBCA recognised standard, the item can be entered as a certified product at Level A, B or C.” Therefore any fabric can be used as fabrics are almost always under 10% by weight of a furniture item

LEED

Fusion can contribute points to the following LEED criteria:

- Bio-Based + Rapidly-Renewable Content (74%)
- Low-VOC
- Extended Producer Responsibility Recycling Program

WELL

Fusion can contribute to the following WELL criteria:

- Low VOC / VOC Reduction: Fusion is low VOC
- Toxic Material Reduction: Fusion is free of PFCs, flame retardants, phthalates and urea formaldehyde