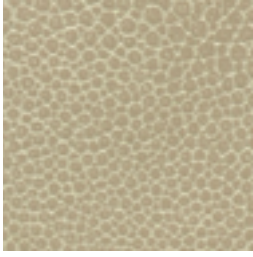


NOMAD

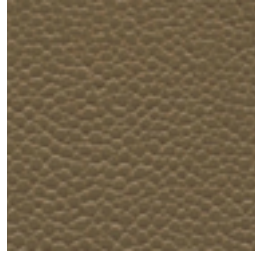
—
A chrome-free, semi-aniline leather with a high degree of durability

IINSTYLE

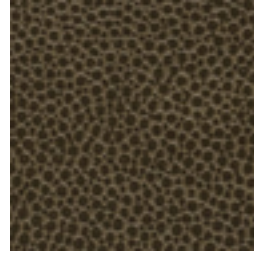
NOMAD



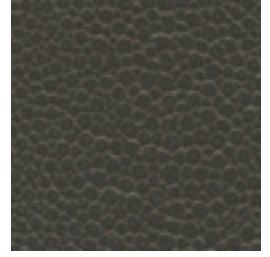
NOMAD Montello



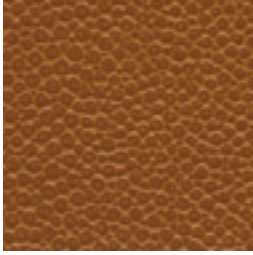
NOMAD Glenora



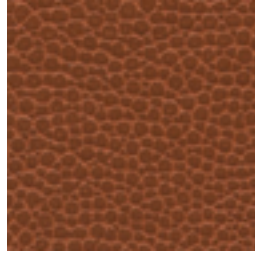
NOMAD Derwent



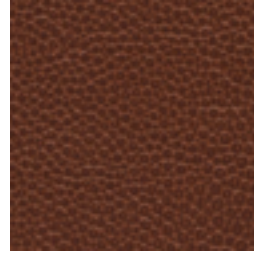
NOMAD Flinders



NOMAD Cowrie



NOMAD Tamar



NOMAD Huon

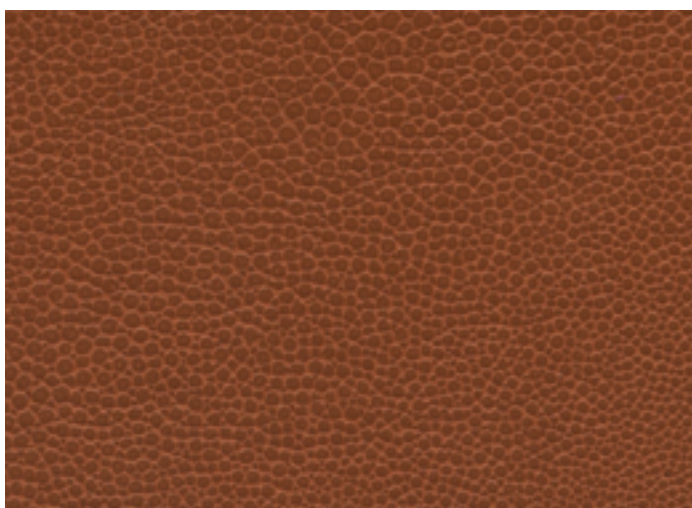



NOMAD Burnie



NOMAD Esk

Leather may vary in colour due to the nature of the media
Please refer to website for current colour range



DESCRIPTION	A chrome-free, semi-aniline leather produced from high quality European hides. The elegant shagreen look of this textured leather has a stingray skin appearance handcrafted by manually applying a tipping effect	
AVERAGE HIDE SIZE	4 sqm approx.	
THICKNESS	1.2 - 1.4mm	
WEIGHT	1100gsm	
LEATHER TYPE	Semi-Aniline 	
COLOURFASTNESS TO-AND-FRO RUBBING	Dry 4 Wet 5 Perspiration 5	
LIGHTFASTNESS	5	
FINISH ADHESION	6.53 (N/10mm)	
pH	pH 4.19	
TEAR STRENGTH EN ISO 3377-1	25 N	
FIRE RATINGS AS/NZS 1530.3	Ignitability	11
	Spread of Flame	0
	Heat Evolved	3
	Smoke Developed	6
AS/NZS 3837 (AS 5637.1)	BCA Group 1	
	Av. Specific Extinction Area	34.6m2/kg
ISO 5660.1	NZBC Group 1S	
APPLICATION	Upholstery seating, screen, wall panel	

PLEASE NOTE

- Sourced from high quality raw hides, Semi-Aniline leathers have a natural grain and an invisible water-based protective coating that ensures the leather is suitable for the most demanding situations while maintaining a very soft handle. A very fine pigment is applied to its surface thus increasing the leather's resistance to colour change that is caused by exposure to sunlight.
- Results from performance tests are guidelines only.

CARE

- Leather Care for Finished Leathers is available from our website

ENVIRONMENT

- Leather is an agricultural by-product
- Certified as low-VOC
- Reusable

GREEN STAR

- NOMAD can contribute low VOC points
- NOMAD can be used on white furniture certified to Ecospecifier, AFRDI, ECNZ and GECA
- The Green Star Rating Tool states "Where at least 90% of an item's mass is certified to a GBCA recognised standard, the item can be entered as a certified product at Level A, B or C." Therefore any leather can be used as leathers are almost always under 10% by weight of a furniture item

LEED

- NOMAD can contribute low VOC points

WELL

- NOMAD can contribute to Low VOC / VOC Reduction
- Toxic Material Reduction: NOMAD is free of PFCs, flame retardants, phthalates and urea formaldehyde

SEATING COMFORT RATING



A rating to determine a leather's seating comfort based upon the leather's ability to breathe and absorb moisture. Tested to ASTM E 96 M-05. NOMAD achieves a Fair Seating Comfort rating.