



FREQUENCY

A dynamic large-scale
wallcovering with a beautiful,
soft texture

INSTYLE

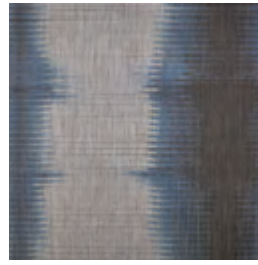
FREQUENCY



Whole Lotta Love FRQ003



Black Dog FRQ004



Stairway to Heaven FRQ001



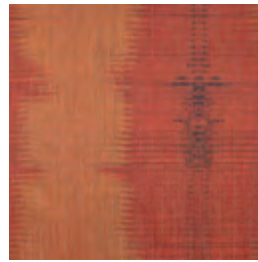
Archilles Last Stand FRQ002



Kashmir FRQ005

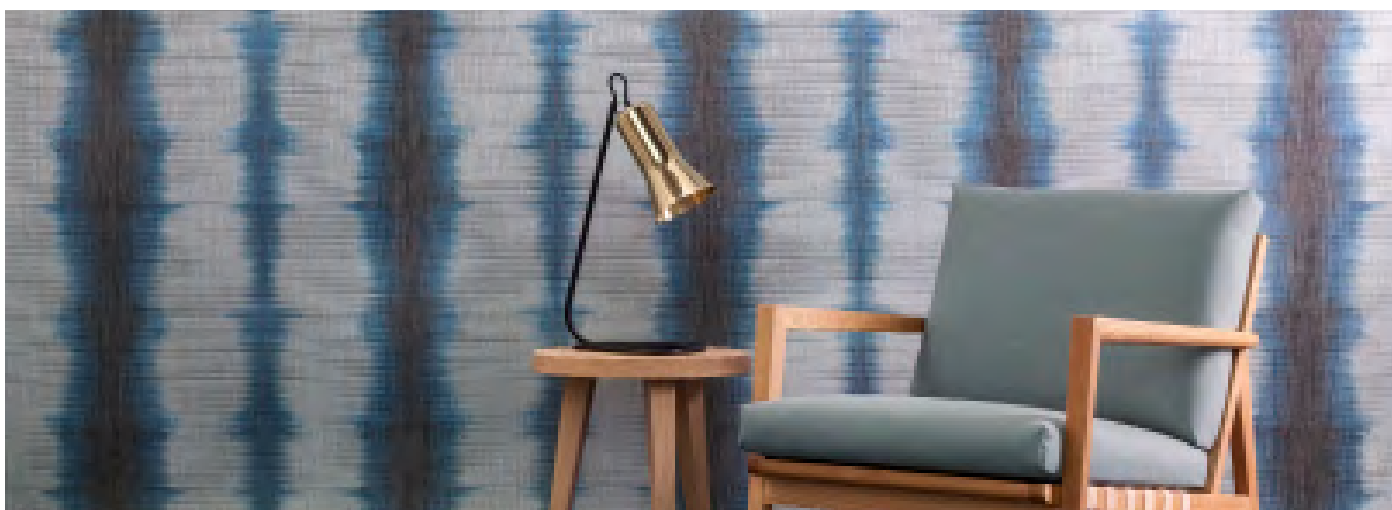


The Lemon Song FRQ007

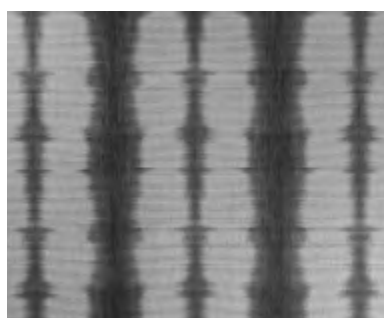


Ramble On FRQ006

Patterns shown are not to scale
Product may vary in colour due to the nature of the media
Please refer to website for current colour range



| | |
|------------------|----------------------------------|
| FACE COMPOSITION | linen, polyester + digital print |
| BACKING TYPE | non-woven |
| WIDTH | 121cm |
| WEIGHT | 281gsm / 341g lineal m |
| PATTERN REPEAT | H 59.7cm V 56.5cm |



↑
56.5cm
↓

← 59.7cm →

ROLL SIZE 27.4m approx. Note: minimum order quantity is 10.9m and 0.9m multiples

PERFORMANCE Untyped Wallcovering

FIRE RATING AS/NZS 3837 BCA Group 2
Av. Specific Extinction Area 45m²/kg

ISO 5660.1 NZBC Group 2-S
in accordance with C/M2 appendix A

ASTM E-84 Tunnel Test Class A

PLEASE NOTE FREQUENCY may exhibit variations in colour and texture. This is the natural characteristic of a handcrafted textile material and is not considered a defect. Seams may be obvious upon installation.

ENVIRONMENT

- FREQUENCY is made from natural linen fibre and no hazardous substances are used during manufacturing. The wallcovering is permeable, contributing to better indoor air quality.

PRODUCT INSTALLATION

- Please refer to installation instructions for FREQUENCY supplied with each shipment.
- All material must be installed in numerical sequence as cut from the roll.

CARE + MAINTENANCE

- Due to the delicate nature of the finishes, care must be taken not to damage or mark the surface due to abrasion / rubbing.
- General maintenance can be achieved with periodic dusting or vacuuming with a soft brush attachment.
- Remove ordinary dirt and smudges with a mild soap and warm water solution. Always test the solution on an inconspicuous portion of the wallcovering before proceeding, checking that there is no adverse effect on finish, colour or gloss. Care should be taken on dark colours due to the possibility of causing 'light marks'. Always use a blotting action rather than rubbing to avoid abrasion. Rinse thoroughly with clean water from the top down using a sponge.
- Dry with a soft lint free cloth or towel.
- Avoid alcohol / solvent based cleaners.
- Please refer to the FREQUENCY care and maintenance instructions for further details.

WARRANTY

- For a period of 3 years from date of invoice this wallcovering is guaranteed to be first quality and free of manufacturing defects. This warranty applies only to professionally applied installations according to the recommended installation instructions, and proper care and maintenance using appropriate cleaning agents as outlined in the care and maintenance instructions.

