

A close-up photograph of a modern wooden chair. The chair features a light-colored wood frame with a curved backrest and a seat. The wood grain is clearly visible. The seat is upholstered in a light brown, textured vinyl material. The background is a neutral, light gray color.

OMNI

A high-performance
indoor vinyl subtle woven
textile appearance

INSTYLE

OMNI



OMNI Hope



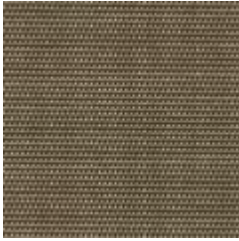
OMNI Present



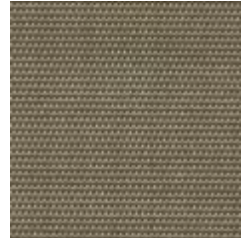
OMNI Fair



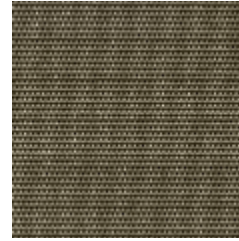
OMNI Bus



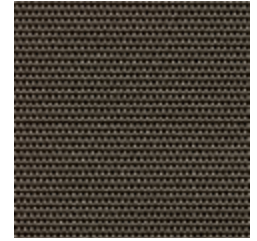
OMNI Accord



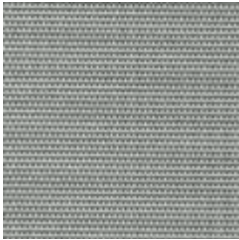
OMNI World



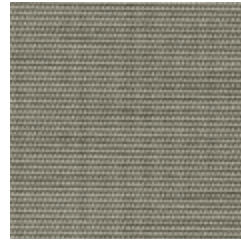
OMNI Effective



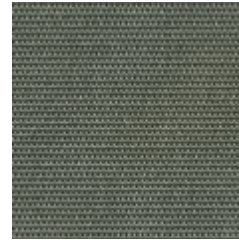
OMNI Reach



OMNI Society



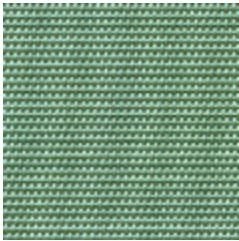
OMNI Collective



OMNI Maxi



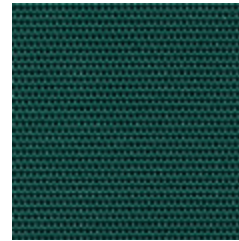
OMNI All



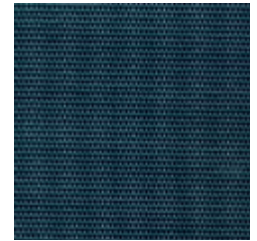
OMNI Sanctuary



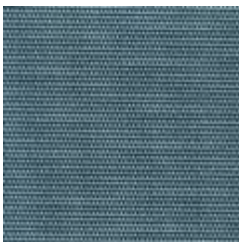
OMNI Freedom



OMNI Union



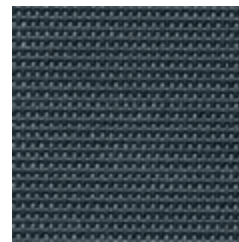
OMNI Sublime



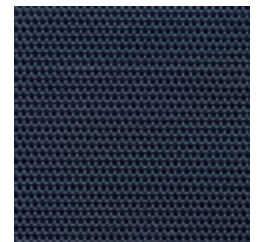
OMNI Everywhere



OMNI Oasis



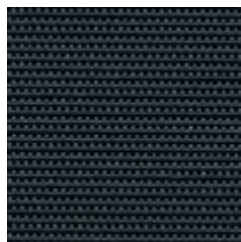
OMNI View



OMNI Team



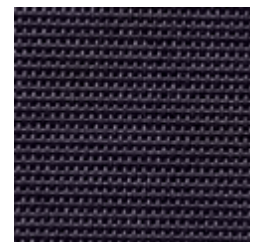
OMNI Image



OMNI Place



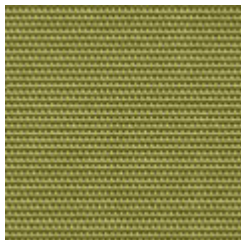
OMNI Adept



OMNI Type

Product may vary in colour due to the nature of the media
Please refer to website for current colour range

OMNI



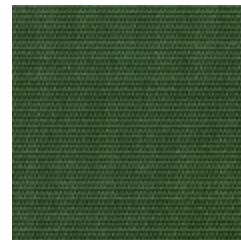
OMNI Wild



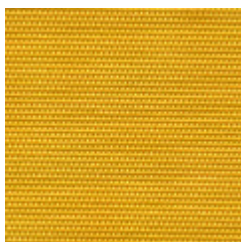
OMNI Domain



OMNI Flourish



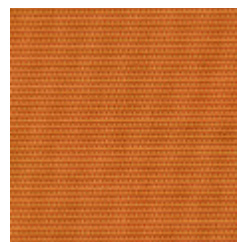
OMNI Kingdom



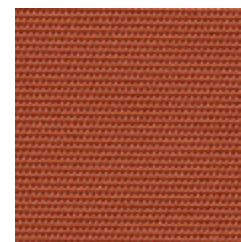
OMNI Movement



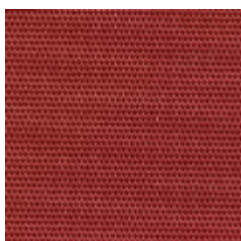
OMNI Trend



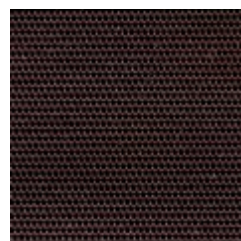
OMNI Celebration



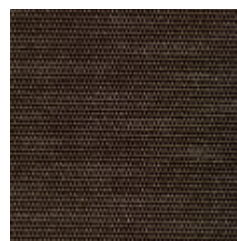
OMNI Global



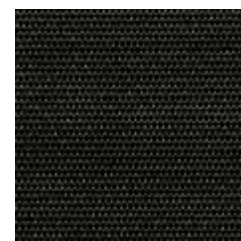
OMNI Divine



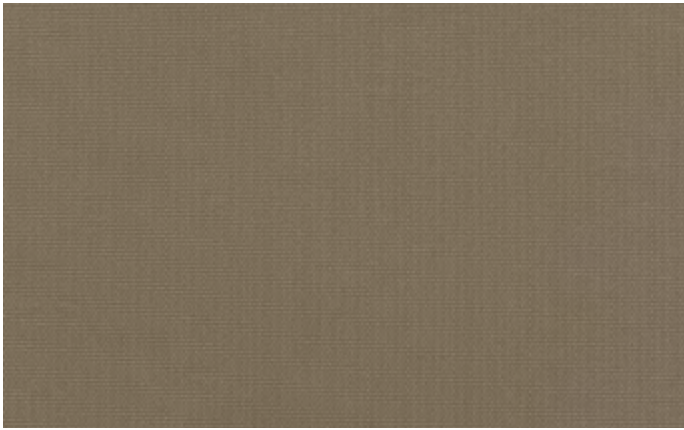
OMNI Intelligence



OMNI Capability



OMNI Empower



COMPOSITION	85% PVC, 15% polyester + Resilience	
WIDTH / ROLL SIZE	137cm / 27.4m approx	
WEIGHT	723gsm	
PATTERN REPEAT	Nil	
CARE CODE	V1	
ABRASION		
Martindale AS2001.2.25	>100,000	
Wyzenbeek ASTM 4157	250,000 double rubs	
LIGHTFASTNESS	7	
ISO 105-B02		
TEARING FORCE	Length 42.7N Width 42.4N	
AS2001.2.10		
FIRE RATINGS	Ignitability	16
AS/NZS 1530.3	Spread of Flame	0
	Heat Evolved	1
	Smoke Developed	6
Additional Fire Tests	FMVSS 302, NFPA 260, California Bulletin 117E	
ADDITIONAL RESULTS	Blocking Resistance AS4878.11 Resistance to Flex Cracking AS4878.9 Rubfastness AS2001.4.3 Tensile Strength AS4878.6 Elongation + Stretch Set AS1441.9 Loss of Plasticiser AS1441.8 Coating Adhesion AS4878.8	
APPLICATION	Upholstery seating (indoor), screen Ideal for healthcare, hospitality, workplace, public building, education, automotive and residential applications	
PLEASE NOTE	Results from performance tests are guidelines only	

PERFORMANCE

- **Permanent stain protection:** The Resilience finish guards against most stains that can simply be wiped away using mild soap and water.
- **Waterproof + water repellent**
- **Abrasion resistance:** Resilience provides additional wear properties and surface durability, thereby increasing the life of the material
- **Easy to clean + bleach cleanable:** Easily cleaned with mild soap and water. Can be easily disinfected using one part bleach and ten parts water

ENVIRONMENT

- Free of phthalates, flame retardant + antibacterial additives (ADF); lead, BPA, TRIS + formaldehyde
- Does not contain conflict minerals
- Reduced energy and water use, recycling of waste + solution-dyed product
- Meets the environmental, health and safety standards set by California Prop 65, CPSIA + REACH

GREEN STAR

- OMNI can be used on white furniture certified to Ecospecifier, AFRDI, ECNZ and GECA.
- The Green Star Rating Tool states "Where at least 90% of an item's mass is certified to a GBCA recognised standard, the item can be entered as a certified product at Level A, B or C." Therefore any fabric can be used as fabrics are almost always under 10% by weight of a furniture item

WELL

- OMNI can contribute to WELL Toxic Material Reduction criterion as it is free of PFCs, flame retardants, phthalates and urea formaldehyde