

Ecoustic® Blade Panel

—
An acoustic modular panel for walls and ceilings
made from PEFC-certified solid timber



Ecoustic® Blade Panel



PRODUCT	Ecoustic® Blade Panel
DESCRIPTION	An acoustic modular panel combining sound absorption with the elegance of PEFC-certified solid timber
DIMENSIONS	305 x 2700mm
COMPOSITION	PEFC-certified timber + black acoustic scrim backing to enhance sound absorption
ACOUSTIC AS/ISO 354	<p>Direct Fix Wall + Soffit Applications Use Ecoustic® 25mm Core (αw 0.8 / NRC 0.85) directly behind Blade panel</p> <p>Ceiling Applications (400mm airgap) 3018-7 αw 0.5 / NRC 0.5 + Ecoustic® Infill αw 0.85 / NRC 0.8</p> <p>3060-4 αw 0.4 / NRC 0.4 + Ecoustic® Infill αw 0.65 / NRC 0.65</p>
FIRE RATINGS	NCC BCA Group 3
Blade	Av. Specific Extinction Area 20.9m ² /kg
AS/NZS 3837 (AS 5637.1)	
Ecoustic® Infill	AS/ISO 9705 Group 1
ENVIRONMENT	Low VOC + PEFC-certified solid timber, sourced from sustainably-managed forests Ecoustic® Blade has an advantage over veneered MDF alternatives that may contain formaldehyde or other VOCs Ecoustic® Infill is made from <60% post-consumer PET packaging
APPLICATION	Wall + ceiling
ORIGIN	Australia
Please contact your local representative for CAD Drawings	

BENEFITS

Versatile: Available in four profile options, Blade Panels can be installed in horizontal or vertical orientation on walls and ceilings. 3018-7 panels align with 3018-14 ceiling tiles, 3060-4 panels align with 3060-8 ceiling tiles providing potential horizontal to vertical blade alignment in ceiling to wall installations.

Ecoustic® Infill for Ceiling Applications: For increased broadband sound absorption including critical human speech range frequencies, panels can be installed with an Ecoustic® Infill.

Ideal for New + Existing Fitouts: Ecoustic® Blade is ideal for any interior space to maximise sound absorption in ceiling applications.

Easy to Install: Designed for modularity, Blade is pre-finished for simple efficient installation and ease of maintenance. A linear timber finish is achieved with minimal onsite labour for installation.

Building Rating Systems: Blade will contribute the following points for Green Star, LEED + WELL building standards.

Criteria	Green Star	LEED	WELL
Low VOC	√	√	√
Recycling Program	-	-	NA
Third Party Certification	-	-	-
Toxic Material Reduction	NA	NA	√

HOW TO SPECIFY

DESIGN	Ecoustic® Blade Panel
PROFILE	3018-9, 3018-7, 1830-7 or 3060-4
PANEL SIZE	305 x 2700mm
FINISH	Select from timber finishes available
FINISHED END PANEL	Specify if required to conceal exposed rails
ECOUSTIC® INFILL	Optional extra - order separately

Ecoustic® Blade Finishes



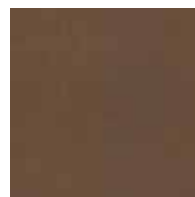
White Wash Hemlock



Hemlock Clear



Shale Hemlock



Hickory Hemlock



Walnut Hemlock



Espresso Hemlock



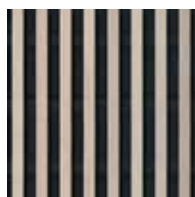
Western Red Cedar*



Spotted Gum*

Profiles

Wall + Ceiling Panels



3018-9



3018-7



1830-7



3060-4

Some finishes are unavailable in selected profiles, please refer to page 4 for details

*Please Note: Timber grain and colour may vary from samples

Product not to scale

Product may vary in colour due to the nature of the media

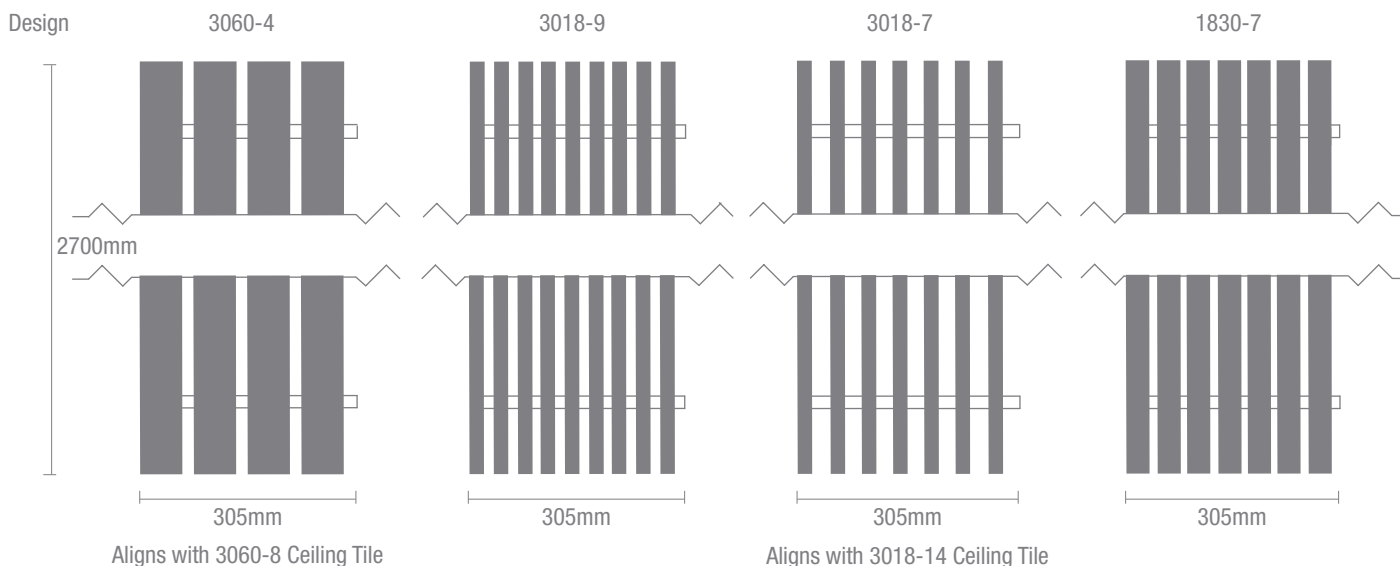
Please refer to website for current finishes range

Wall + Ceiling Panel Section View

End View



Front View



Dimensions, Blade Size, Blade Quantity + Weight Per Panel

DESIGN	3060-4	3018-9	3018-7	1830-7
Blade Depth (mm)	30	30	30	18
Blade Thickness (mm)	60	18	18	30
Blades per Tile	4	9	7	7
WEIGHT (kg per panel)	305 x 2700mm Panels			
Hemlock	10.2	7.1	5.6	5.6
Spotted Gum	N/A	14.4	11.5	11.2
Western Red Cedar	7.3	4.6	4	4
PRODUCT QTY PER BOX	4	4	4	4