

Ecooustic® Blade FR Panel

—
An acoustic wall + ceiling panel combining
a timber aesthetic + improved fire rating



INSTYLE

Ecoustic® Blade FR Panel Specification



PRODUCT	Ecoustic® Blade FR Panel
DESCRIPTION	An acoustic panel combining sound absorption with a timber aesthetic + improved fire rating
DIMENSIONS	305 x 2700mm
COMPOSITION	Fire rated composite + black acoustic scrim backing to enhance sound absorption
ACOUSTIC AS/ISO 354	<p>Direct Fix Wall + Soffit Applications Use Ecoustic® 25mm Core (α_w 0.8 / NRC 0.85) directly behind Blade panel</p> <p>Ceiling Applications (400mm airgap) 3018-7 α_w 0.5 / NRC 0.5 + Ecoustic® Infill α_w 0.85 / NRC 0.8</p> <p>3060-4 α_w 0.4 / NRC 0.4 + Ecoustic® Infill α_w 0.65 / NRC 0.65</p> <p>For increased broadband sound absorption, Blade FR Ceiling Panels can be installed with an Ecoustic® Infill</p>
FIRE RATINGS	AS/ISO 9705 (AS 5637.1) NCC BCA Group 2
Blade FR	
Ecoustic® Infill	AS/ISO 9705 Group 1
ENVIRONMENT	Low VOC + PVC-free Ecoustic® Infill is made from <60% post-consumer PET packaging
APPLICATION	Wall + ceiling
ORIGIN	Australia

Please contact your local representative for CAD Drawings

BENEFITS

Versatile: Available in five profile options, Blade FR panels can be installed in horizontal or vertical orientation on walls and ceilings. 3018-14 ceiling tile aligns with 3018-7 panel, 2560-8 ceiling tile aligns with 2560-4 panel, providing potential for vertical to horizontal blade alignment in ceiling to wall installations.

Ideal for New + Existing Fitouts: Ecoustic® Blade FR maximises sound absorption in ceiling applications for any interior.

Easy to Install: Designed for modularity, Blade FR is pre-finished allowing for simple efficient installation and ease of ongoing maintenance. The design results in a linear timber finish with minimal onsite labour for installation.

Building Rating Systems: Blade FR will contribute the following points for Green Star, LEED + WELL building standards.

Criteria	Green Star	LEED	WELL
Low VOC	√	√	√
Recycling Program	-	-	NA
Third Party Certification	-	-	-
Toxic Material Reduction	NA	NA	√

HOW TO SPECIFY	
DESIGN	Ecoustic® Blade FR Panel
PROFILE	Select from 3018-9, 3018-7, 1830-7, 2560-4 or 6018-5
PANEL SIZE	305 x 2700mm
FINISH	Select from 9 FR finishes available
FINISHED END PANEL	Specify if required to conceal exposed rails
ECOUSTIC® INFILL	Optional extra - order separately

Ecoustic® Blade FR Finishes



Samite FR



Pike FR



Odeum FR



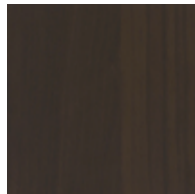
Bluff FR



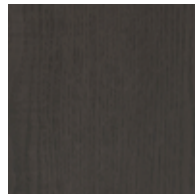
Dome FR



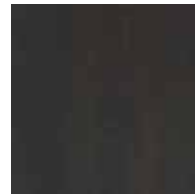
Trek FR



Griddle FR



Mesa FR



Nevada FR

Profiles

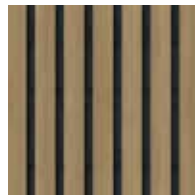
Wall + Ceiling Panels



3018-9



3018-7



1830-7



2560-4



6018-5

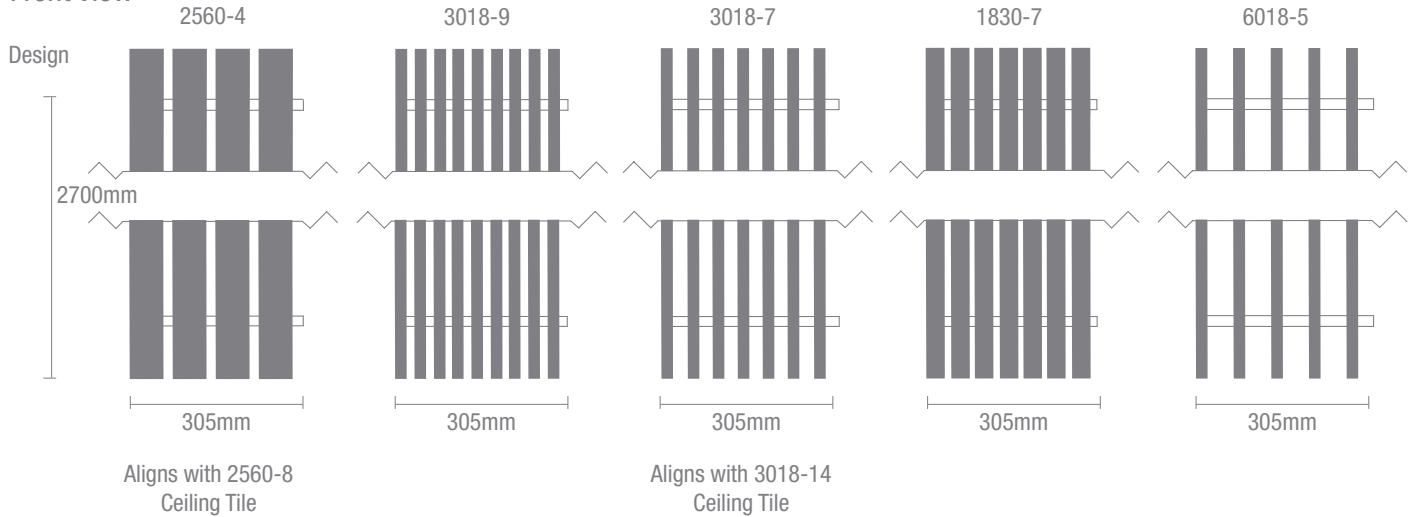
*Please Note: Timber grain and colour may vary from samples
Product not to scale
Product may vary in colour due to the nature of the media
Please refer to website for current finishes range

Wall + Ceiling Panel Section View

End View



Front View



Dimensions, Blade Size, Blade Quantity + Weight Per Panel

DESIGN	2560-4	3018-9	3018-7	1830-7	6018-5
Blade Depth (mm)	25	30	30	18	60
Blade Thickness (mm)	60	18	18	30	18
Blades per Tile	4	9	7	7	5
WEIGHT (kg per panel)	305 x 2700mm Panels				
ALL FINISHES	12.5	10	8	8	11
PRODUCT QTY PER BOX	4	4	4	4	4