

# LONHIDE

---

A robust wallcovering featuring a subtle raised dot pattern

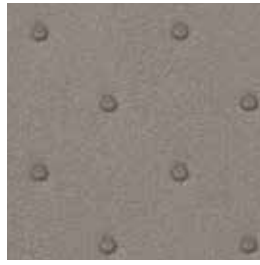


INSTYLE

# LONHIDE



Pearl 178-H18



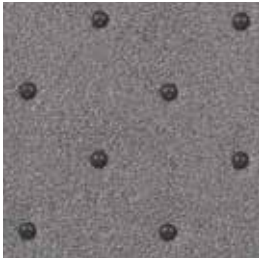
Gold Dust Grey 174-H14



Pale Gold 177-H17



Bronzed 173-H73



Gunmetal 175-H15

Patterns shown are not to scale  
Product may vary in colour due to the nature of the media  
Please refer to website for current colour range



FACE COMPOSITION	vinyl (PVC)
BACKING TYPE	woven cotton
WIDTH	91cm
WEIGHT	1237gsm / 1126g lineal m
PATTERN REPEAT	H 2.5cm V 2.5cm
ROLL SIZE	14.6m approx. Note: minimum order quantity is 10.9m and 0.9m multiples
PERFORMANCE	Type II Wallcovering
FIRE RATING AS/NZS 3837	BCA Group 2 Av. Specific Extinction Area 653.4 m2/kg
Additional Fire Tests	ASTM E-84 Tunnel Test Class A
PLEASE NOTE	Results from performance tests are guidelines only

**PRODUCT INSTALLATION**

- Please refer to installation instructions for LONHIDE supplied with each shipment. A copy is also available on our website.
- All material must be installed in numerical sequence as cut from the roll.

**CARE + MAINTENANCE**

- General maintenance can be achieved with periodic dusting or vacuuming with a soft brush attachment.
- Remove ordinary dirt and smudges with a mild soap and warm water solution. Always test the solution on an inconspicuous portion of the wallcovering before proceeding, checking that there is no adverse effect on finish, colour or gloss. Care should be taken on dark colours due to the possibility of causing 'light marks'. Always use a blotting action rather than rubbing to avoid abrasion. Rinse thoroughly with clean water from the top down using a sponge.
- Deeply embossed wallcoverings need extra attention in case suds or loosened dirt lodge in depressed surfaces.
- Dry wallcovering with a soft lint free cloth or towel.
- Please refer to the LONHIDE care instructions for further details. A copy is available on our website.

**WARRANTY**

- For a period of 3 years from date of invoice this wallcovering is guaranteed to be first quality and free of manufacturing defects. This warranty applies only to professionally applied installations according to the recommended installation instructions, and proper care and maintenance using appropriate cleaning agents as outlined in the care instructions.