



ACCENT

A sophisticated vinyl with an antique wax-polished appearance

ACCENT



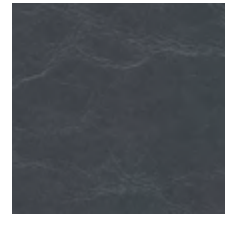
ACCENT Polar



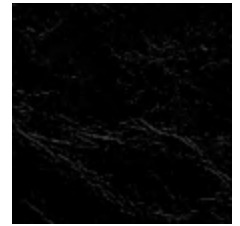
ACCENT Antique



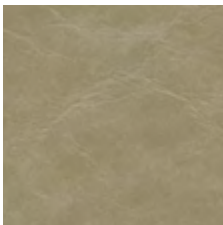
ACCENT Misty



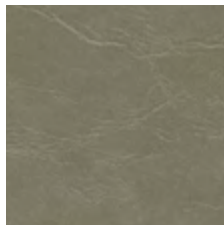
ACCENT Ironstone



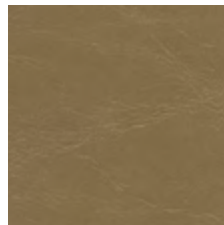
ACCENT Shadow



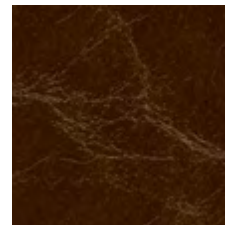
ACCENT Sandstone



ACCENT Willow



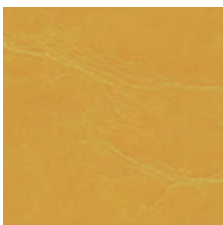
ACCENT Malt



ACCENT Caramel



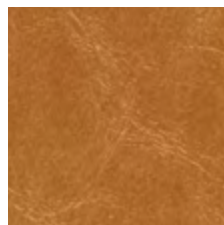
ACCENT Toffee



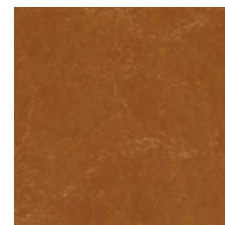
ACCENT Highlight



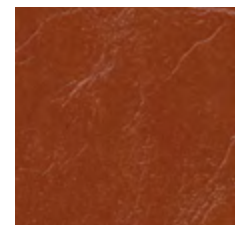
ACCENT Citronella



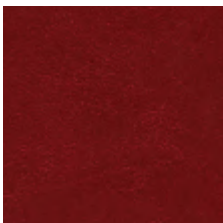
ACCENT Desert



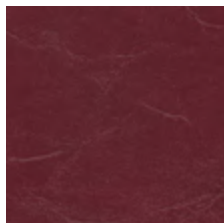
ACCENT Spice



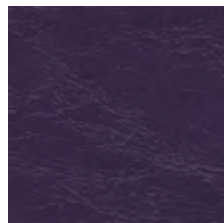
ACCENT Brick



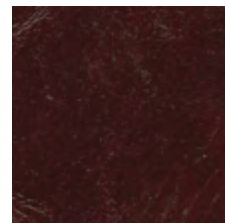
ACCENT Hot



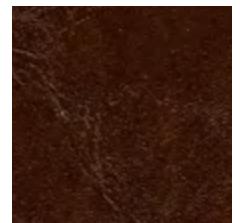
ACCENT Russet



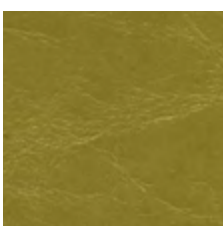
ACCENT Iris



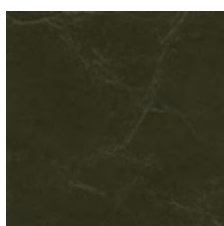
ACCENT Plum



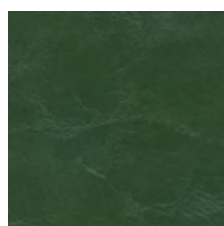
ACCENT Cowboy



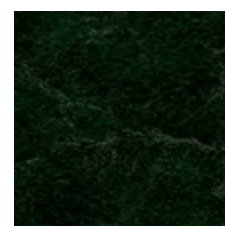
ACCENT Grasshopper



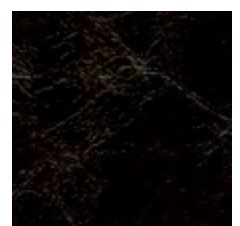
ACCENT Khaki



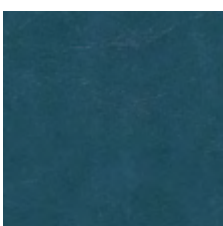
ACCENT Forest



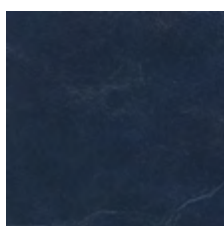
ACCENT Jungle



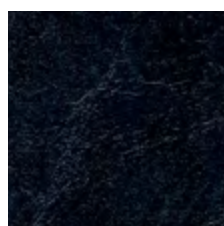
ACCENT Burnish



ACCENT Lagoon



ACCENT Inky



ACCENT Dusk

Product may vary in colour due to the nature of the media
Please refer to website for current colour range



COMPOSITION	80% PVC, 15% polyester, 5% cotton								
WIDTH / ROLL SIZE	137cm / 27.4m approx.								
WEIGHT	780gsm								
PATTERN REPEAT	nil								
CARE CODE	V2								
ABRASION									
Martindale AS2001.2.25	100,000								
LIGHTFASTNESS	> 6								
AS2001.4.21									
FASTNESS TO RUBBING	Wet 5 Dry 5								
AS2001.4.3									
BREAKING FORCE	Length 295 Width 285 (N/50mm)								
AS4878.6									
COATING ADHESION	Length 48.3 Width 55.0 (N/50mm)								
AS4878.8									
RESISTANCE TO FLEXING	Length + Width: No cracking								
AS4878.9									
BLOCKING RESISTANCE	F to F Slight adhesion / No damage								
RESISTANCE TO HEAT	F to B No blocking or adhesion								
AS4878.11	B to B No blocking or adhesion								
LOSS OF PLASTICISER	1.3 %								
AS1441.8									
UV RESISTANCE	200 hours (excellent)								
ASTM G26-96 Method C									
FIRE TESTS									
AS/NZS 1530.3	<table border="0"> <tr> <td>Ignitability</td> <td>16</td> </tr> <tr> <td>Spread of Flame</td> <td>0</td> </tr> <tr> <td>Heat Evolved</td> <td>2</td> </tr> <tr> <td>Smoke Developed</td> <td>7</td> </tr> </table>	Ignitability	16	Spread of Flame	0	Heat Evolved	2	Smoke Developed	7
Ignitability	16								
Spread of Flame	0								
Heat Evolved	2								
Smoke Developed	7								
APPLICATION	Indoor upholstery, banquette seating, bedheads, screen, healthcare, hospitality, education + office								
PLEASE NOTE	Results from performance tests are guidelines only								

PERFORMANCE

- **Waterproof, Easy to Clean + Bleach Resistant:** Easily cleaned with mild soap and water. Can be easily disinfected using one part bleach and ten parts water
- **Superior Light Fastness:** Achieves > 200 hours light fastness
- **Additional Stability:** Woven fabric backing provides additional stability

ENVIRONMENT

- Free of phthalates, flame retardant + anti-bacterial additives (ADF); lead, BPA, TRIS + formaldehyde
- Does not contain conflict minerals
- Reduced energy and water use, recycling of waste + solution-dyed product
- Meets the environmental, health and safety standards set by California Prop 65, CPSIA + REACH

GREEN STAR

- ACCENT can be used on white furniture certified to Ecospecifier, AFRDI, GECA and ECNZ.
- The Green Star Rating Tool states “Where at least 90% of an item’s mass is certified to a GBCA recognised standard, the item can be entered as a certified product at Level A, B or C.” Therefore any fabric can be used as fabrics are almost always under 10% by weight of a furniture item.

WELL

- ACCENT can contribute to WELL Toxic Material Reduction criterion as it is free of PFCs, flame retardants, phthalates and urea formaldehyde