

WILLOW

A classic and durable
wallcovering with a
soft tactile aesthetic



INSTYLE

WILLOW



Alpine WIL-01



Laurel WIL-02



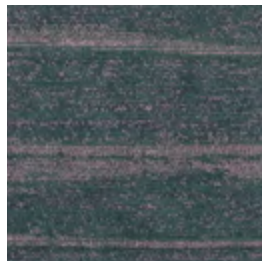
Sandbar WIL-03



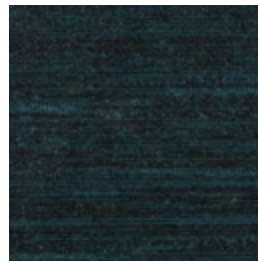
Sierra WIL-07



Bayberry WIL-04

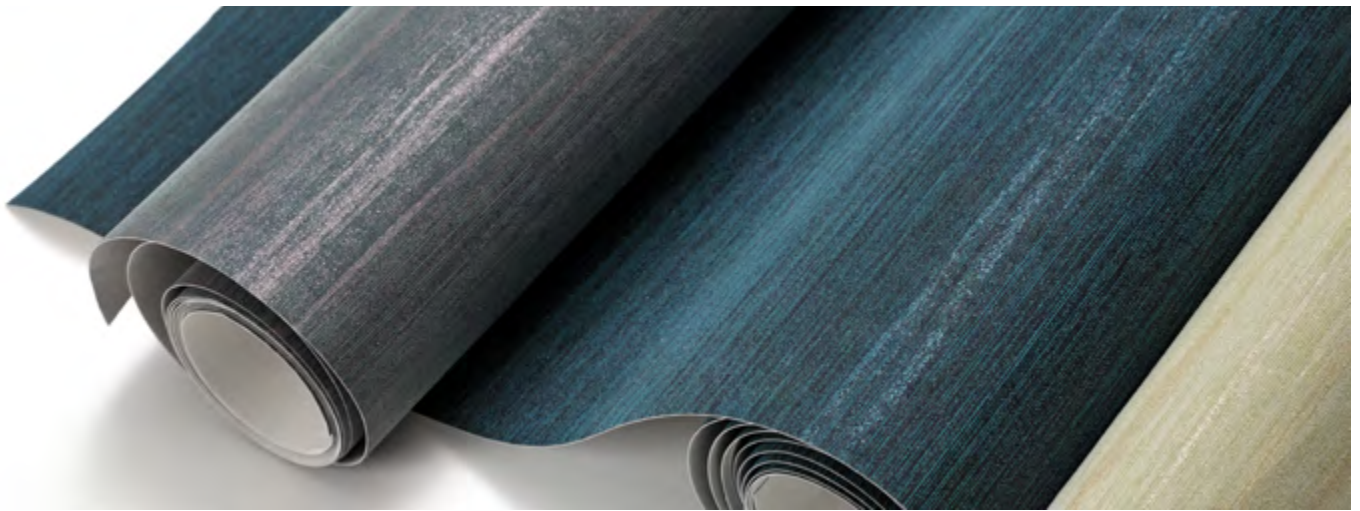


Daphne WIL-05



Myrtle WIL-06

Patterns shown are not to scale
Product may vary in colour due to the nature of the media
Please refer to website for current colour range



FACE COMPOSITION	72% wood-pulp + polyester, 28% acrylic
BACKING TYPE	non-woven
WIDTH	95cm
WEIGHT	180gsm / 171g lineal m
PATTERN REPEAT	non-match
ROLL SIZE	50.3m approx. NB: minimum order quantity is 10.9m and 0.9m multiples
PERFORMANCE	Untyped Wallcovering WILLOW has a proprietary impact resistant coating Suitable for high traffic environments
FIRE RATING	ASTM E-84 Tunnel Test Class A

PRODUCT INSTALLATION

- Please refer to installation instructions for WILLOW supplied with each shipment. A copy is also available on our website.
- All material must be installed in numerical sequence as cut from the roll.

CARE + MAINTENANCE

- Due to the delicate nature of the finishes, care must be taken not to damage or mark the surface due to abrasion / rubbing.
- General maintenance can be achieved with periodic dusting or vacuuming with a soft brush attachment.
- Remove ordinary dirt and smudges with a mild soap and warm water solution.
- Always test the solution on an inconspicuous portion of the wallcovering before proceeding, checking that there is no adverse effect on finish, colour or gloss.
- Care should be taken on dark colours due to the possibility of causing 'light marks'. Always use a blotting action rather than rubbing to avoid abrasion.
- Rinse thoroughly with clean water from the top down using a sponge.
- Dry with a soft lint free cloth or towel.
- Avoid alcohol / solvent based cleaners.
- WILLOW care and maintenance instructions are available on our website.

WARRANTY

- For a period of 3 years from date of invoice this wallcovering is guaranteed to be first quality and free of manufacturing defects. This warranty applies only to professionally applied installations according to the recommended installation instructions, and proper care and maintenance using appropriate cleaning agents as outlined in the care and maintenance instructions

