

GRIT

A high performance
wallcovering inspired by
the look and feel of linen



INSTYLE

GRIT



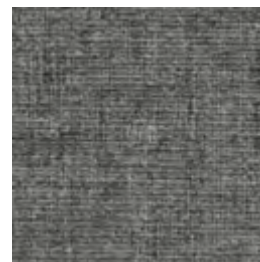
Chert GRI-004



Coquina GRI-005



Cinder GRI-006



Scoria GRI-007



Arkose GRI-001



Gabbro GR1-002



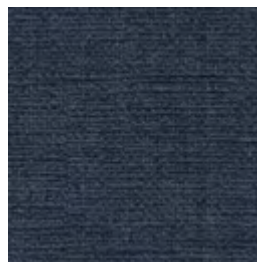
Tephra GRI-003



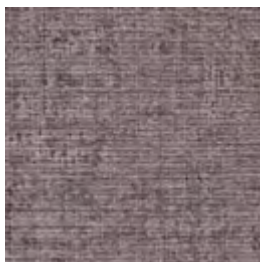
Serpentine GRI-010



Hornfels GRO-009



Beryl GRI-008



Lapilli GRI-011



Clay GRI-012

Patterns shown are not to scale
Product may vary in colour due to the nature of the media
Please refer to website for current colour range



FACE COMPOSITION	vinyl (PVC)
BACKING TYPE	osnaburg
WIDTH	137cm
WEIGHT	452gsm / 619g lineal m
PATTERN REPEAT	non-match
ROLL SIZE	27.4m approx. Note: minimum order quantity is 10.9m and 0.9m multiples
PERFORMANCE	Type II Wallcovering Ideal for high traffic environments
FIRE RATING AS/NZS 3837 AS 5637.1	BCA Group 2 Av. Specific Extinction Area 51.3 m2/kg
ISO 5660.1	NZBC Group 2S Av. Specific Extinction Area 5.2 m2/kg
Additional Fire Tests	ASTM E-84 Tunnel Test Class A EN 13501-1 Euroclass B
ENVIRONMENT	Reduced hazardous substances

PRODUCT INSTALLATION

- Detailed installation instructions for GRIT are supplied with each shipment and should be referred to before cutting or installing this wallcovering. A copy is also available on our website.

CARE + MAINTENANCE

- General maintenance can be achieved with periodic dusting or vacuuming with a soft brush attachment.
- Remove ordinary dirt and smudges with a mild soap and warm water solution.
- Avoid all solvent based cleaners.
- Always test the solution on an inconspicuous portion of the wallcovering before proceeding, checking that there is no adverse effect on finish, colour or gloss.
- Care should be taken on dark colours due to the possibility of causing 'light marks'. Always use a blotting action rather than rubbing to avoid abrasion.
- Rinse lightly with clean water and sponge.
- Deeply embossed wallcoverings need extra attention in case suds or loosened dirt lodge in depressed surfaces.
- Dry with a soft lint free cloth or towel.
- GRIT care and maintenance instructions are available on our website.

WARRANTY

- For a period of 3 years from date of invoice this wallcovering is guaranteed to be first quality and free of manufacturing defects. This warranty applies only to professionally applied installations according to the recommended installation instructions, and proper care and maintenance using appropriate cleaning agents as outlined in the care and maintenance instructions.

