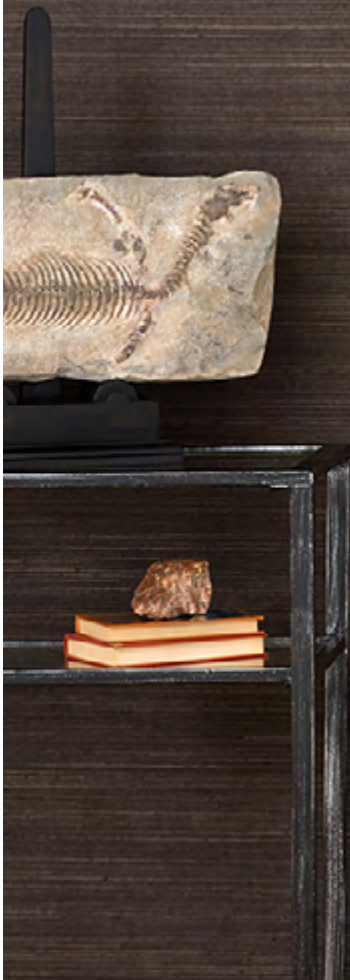


SILT

—

A wallcovering that
showcases the subtle
natural beauty of abaca



INSTYLE

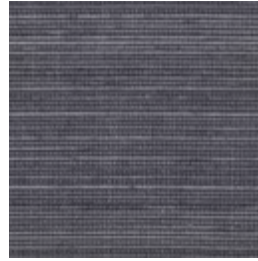
SILT



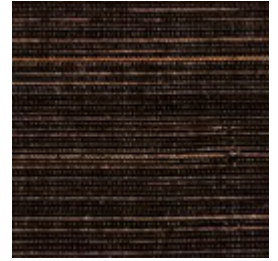
Nile SIL01



Yellow River SIL02



Amazon SIL03



Tigris SIL04

Patterns shown are not to scale
Product may vary in colour due to the nature of the media
Please refer to website for current colour range



FACE COMPOSITION	abaca + filament yarn
BACKING TYPE	paper
WIDTH	91cm
WEIGHT	212gsm / 193g lineal m
PATTERN REPEAT	non-match
ROLL SIZE	27.4m approx. Note: minimum order quantity is 10.9m and 0.9m multiples
PERFORMANCE	Untyped Wallcovering
FIRE RATING	ASTM E-84 Tunnel Test Class A
PLEASE NOTE	SILT may exhibit variations in colour and texture. This is integral to the beauty and character of the handcrafted organic material. Seams may be obvious upon installation and there will be a panelling effect.

ENVIRONMENT

- Free of PVC, chlorine, heavy metals and urea formaldehyde
- Only water based inks and coatings are used



PRODUCT INSTALLATION

- Please refer to installation instructions for SILT supplied with each shipment. A copy is also available on our website.
- Abaca is hand-woven and variation in colour and texture will create a panelling effect. It is advisable to cut and layout all drops for SILT prior to installation to panel material properly from light to dark.

CARE + MAINTENANCE

- Due to the delicate nature of the finishes, care must be taken not to damage or mark the surface due to abrasion / rubbing.
- General maintenance can be achieved with periodic dusting or vacuuming with a soft brush attachment.
- Remove ordinary dirt and smudges with a mild soap and warm water solution.
- Always test the solution on an inconspicuous portion of the wallcovering before proceeding, checking that there is no adverse effect on finish, colour or gloss.
- Care should be taken on dark colours due to the possibility of causing 'light marks'. Always use a blotting action rather than rubbing to avoid abrasion.
- Rinse thoroughly with clean water from the top down using a sponge.
- Dry with a soft lint free cloth or towel.
- Avoid alcohol / solvent based cleaners.
- SILT care and maintenance instructions are available on our website.

WARRANTY

- For a period of 3 years from date of invoice this wallcovering is guaranteed to be first quality and free of manufacturing defects. This warranty applies only to professionally applied installations according to the recommended hanging instructions, and proper care and maintenance using appropriate cleaning agents as outlined in the care and maintenance instructions.