

MARRAKESH

A high performance
wallcovering with a
linen-look texture



INSTYLE

MARRAKESH



Sea Salt MKS012



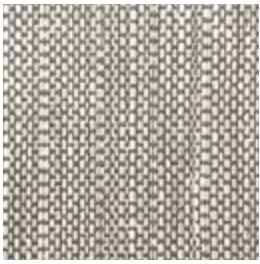
Anise MKS013



Almond MKS010



Coriander MKS004



Garlic MKS006



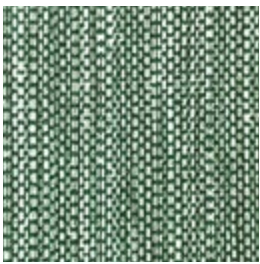
Cloves MKS014



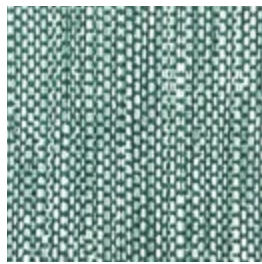
Cinnamon MKS015



Allspice MKS008



Mint MKS017



Ultra Violet MKS016



Blue Crocus MKS003



Black Pepper MKS009

Patterns shown are not to scale
Product may vary in colour due to the nature of the media
Please refer to website for current colour range



FACE COMPOSITION	vinyl (PVC)
BACKING TYPE	non-woven
WIDTH	137cm
WEIGHT	453gsm / 620g lineal m
PATTERN REPEAT	non-match
ROLL SIZE	27.4m approx. Note: minimum order quantity is 10.9m and 0.9m multiples
PERFORMANCE	Type II Wallcovering
FIRE RATING AS/NZS 3837 AS 5637.1	BCA Group 2 Av. Specific Extinction Area 51.3 m2/kg
ISO 5660.1	NZBC Group 2S Av. Specific Extinction Area 5.2 m2/kg
Additional Fire Tests	ASTM E-84 Tunnel Test Class A

PRODUCT INSTALLATION

- Please refer to installation instructions for MARRAKESH supplied with each shipment. A copy is also available on our website. Installation instructions should be referred to before cutting or installing this wallcovering.
- All material must be installed in numerical sequence as cut from the roll.

CARE + MAINTENANCE

- General maintenance can be achieved with periodic dusting or vacuuming with a soft brush attachment.
- Remove ordinary dirt and smudges with a mild soap and warm water solution. Always test the solution on an inconspicuous portion of the wallcovering before proceeding, checking that there is no adverse effect on finish, colour or gloss. Care should be taken on dark colours due to the possibility of causing 'light marks'. Always use a blotting action rather than rubbing to avoid abrasion. Rinse thoroughly with clean water from the top down using a sponge.
- Deeply embossed wallcoverings need extra attention in case suds or loosened dirt lodge in depressed surfaces.
- Dry wallcovering with a soft lint free cloth or towel.
- Please refer to the MARRAKESH care and maintenance instructions for further details.

WARRANTY

- For a period of 3 years from date of invoice this wallcovering is guaranteed to be first quality and free of manufacturing defects. This warranty applies only to professionally applied installations according to the recommended hanging instructions, and proper care and maintenance using appropriate cleaning agents as outlined in the care and maintenance instructions.

