

CIRCUIT

A sophisticated and clever fine stripe pattern from the Kinetic collection.



INSTYLE

CIRCUIT



CIRCUIT Short



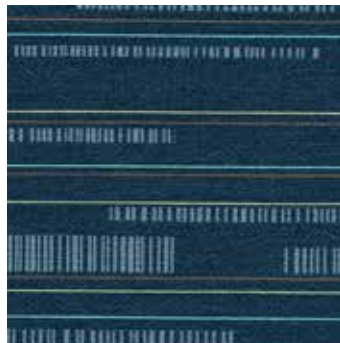
CIRCUIT Interval



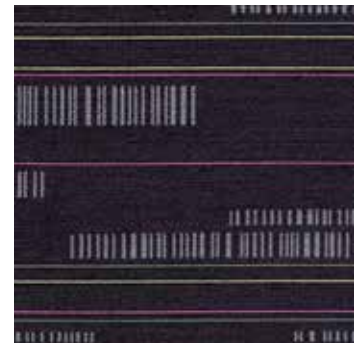
CIRCUIT Class



CIRCUIT Open



CIRCUIT Electrical



CIRCUIT Training



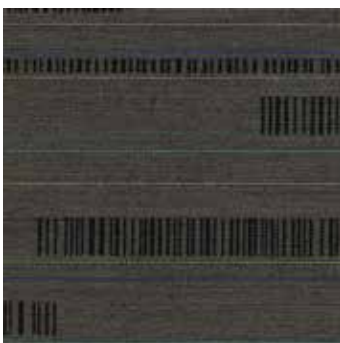
CIRCUIT Race



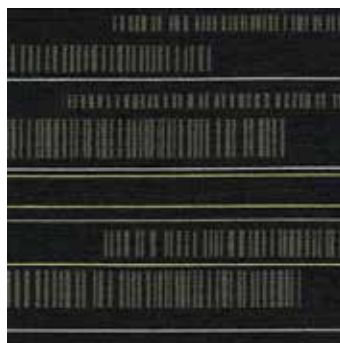
CIRCUIT Fast



CIRCUIT Map



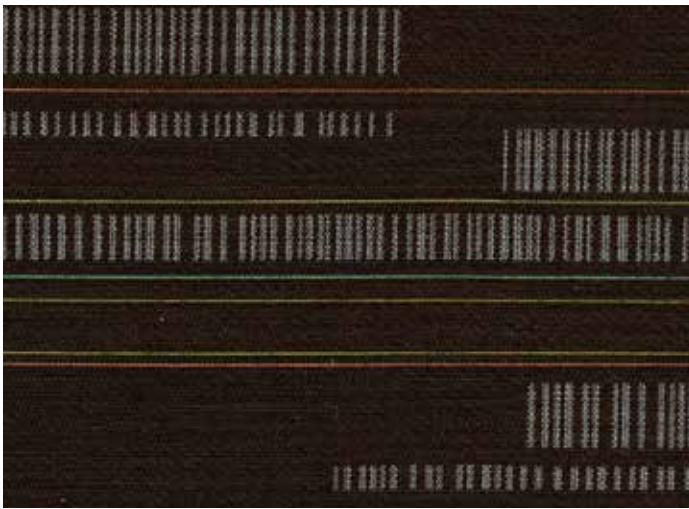
CIRCUIT Phase




CIRCUIT Board

Patterns shown are not to scale
Product may vary in colour due to the nature of the media
Please refer to website for current colour range

CIRCUIT



COMPOSITION	46% nylon, 34% wool, 17% post-consumer recycled polyester, 3% cotton	
WIDTH / WEIGHT	137cm / 260gsm	
PATTERN REPEAT	H 23.5cm V 34.2cm	
ROLL SIZE	55m approx.	
CARE CODE	CTA 1	
ABRASION		
Wyzenbeek ASTM 4157	100,000 double rubs	
Martindale AS2001.2.25	100,000	
CTA RATING		HEAVY DUTY COMMERCIAL USE
SEAM SLIPPAGE	Warp 3.2mm Weft 2.3mm	
AS2001.2.22	Note: All seams must be overlocked or secured to prevent the premature failure of the seam due to fraying	
PILLING	5	
Martindale IWS196		
LIGHTFASTNESS	6	
ISO 105 B02		
FIRE RATINGS		
AS/NZS 1530.3	Ignitability	9
	Spread of Flame	0
	Heat Evolved	2
	Smoke Developed	4
AS/NZS 3837 (Cone Calorimeter)	BCA Group 2	
	Av. Specific Extinction Area	202.3 m ² /kg
APPLICATION	upholstery, screens, wall panels	

ENVIRONMENT

- 37% rapidly renewable content (wool and cotton).
- 17% post-consumer recycled content (polyester).
- Environmentally Improved Production Process: reduced energy consumption, reuse and recycling of waste, and use of environmentally optimised dyes.
- Cotton and wool absorb prevalent indoor air contaminants therefore benefiting indoor air quality.
- Reusable and 37% biodegradable (natural fibre content).

GREEN STAR + LEED

- CIRCUIT can be used on white furniture certified to Ecospecifier, AFRDI, GECA and ECNZ.
- The Green Star Rating Tool states “Where at least 90% of an item’s mass is certified to a GBCA recognised standard, the item can be entered as a certified product at Level A, B or C.” Therefore any fabric can be used as fabrics are almost always under 10% by weight of a furniture item.
- 37% rapidly renewable content contributes to LEED MR Credit 6 Rapidly Renewable Materials.
- 17% post consumer content contributes to LEED MR Credit 4 Recycled Content.

PATTERN REPEAT

