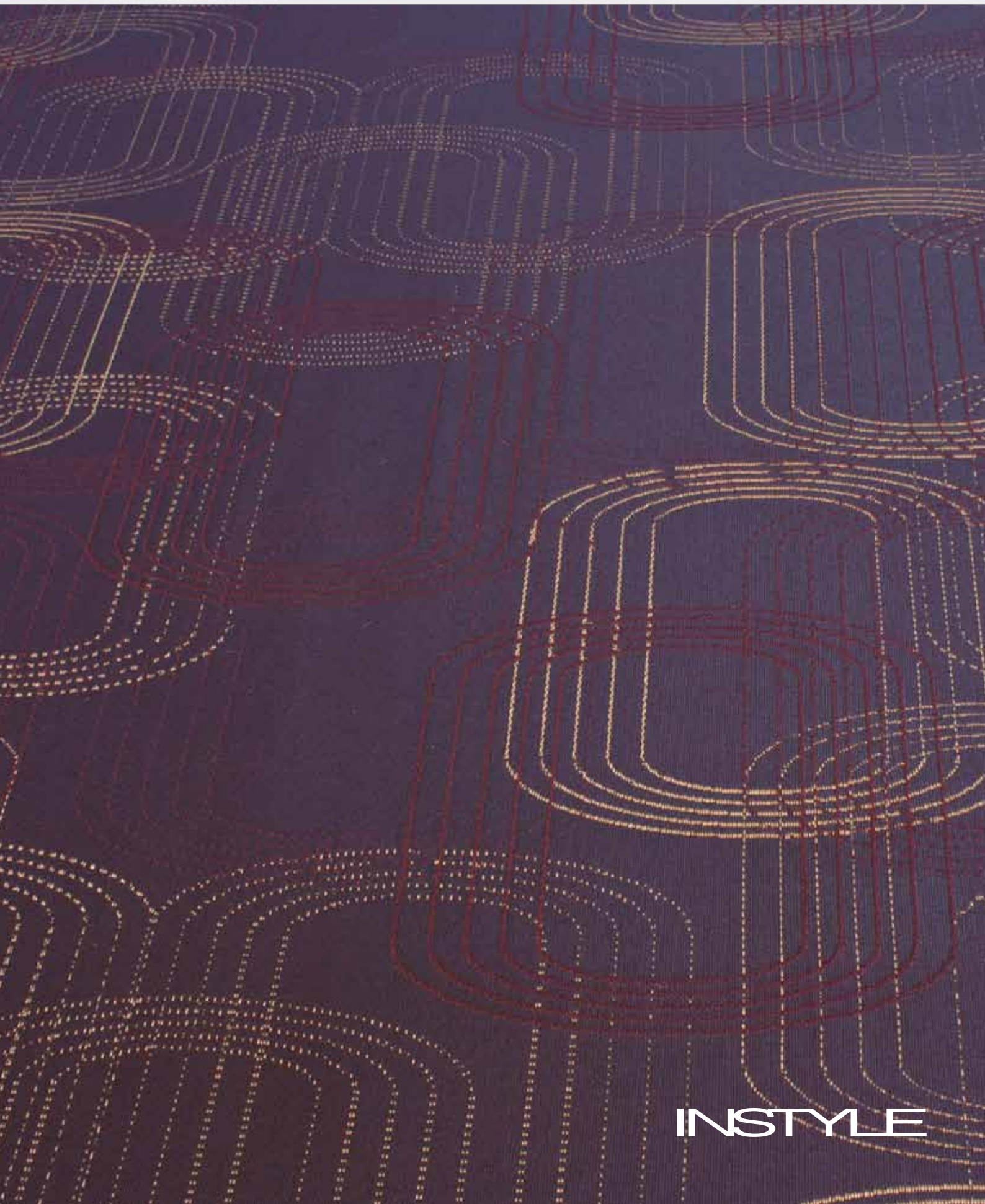


VIEW

A high performance Crypton® textile with a contemporary stitch pattern.



INSTYLE

VIEW



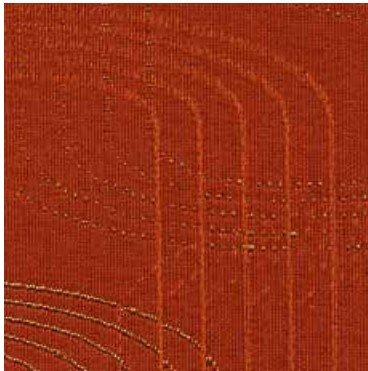
VIEW Landscape



VIEW Point



VIEW Attachment



VIEW Quick



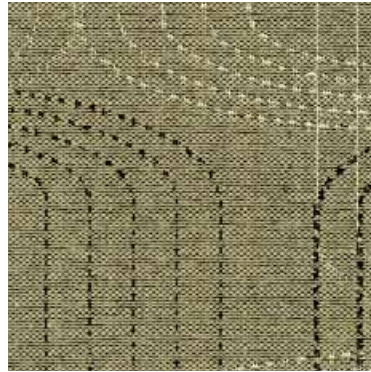
VIEW All



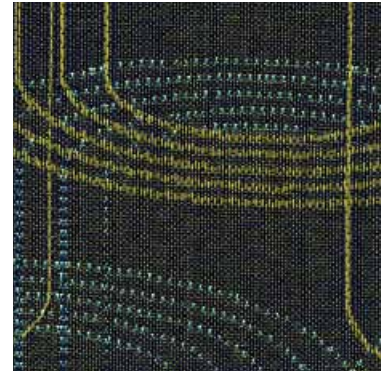
VIEW Online



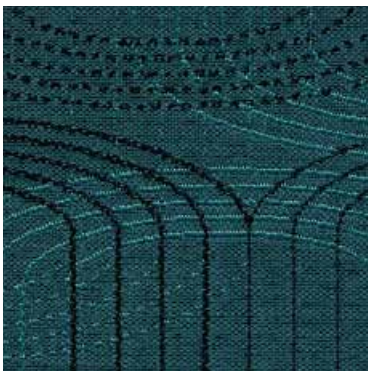
VIEW From Above



VIEW Finder



VIEW Clear




VIEW Outside



VIEW Worldwide

Product may vary in colour due to the nature of the media
Patterns shown are not to scale
Please refer to website for current colour range



COMPOSITION	100% polyester + Crypton® finish and backing
WIDTH / ROLL SIZE	137cm / 55m (approx)
WEIGHT	380gsm
PATTERN REPEAT	H 36cm V 37cm (This design is railroaded)
CARE CODE	Crypton
ABRASION	
Wyzenbeek ASTM 4157	50,000 double rubs
Martindale AS2001.2.25	20,000
CTA RATING	 GENERAL COMMERCIAL USE
SEAM SLIPPAGE	Warp 3.7mm Weft 3.0mm
AS2001.2.22	Note: All seams must be overlocked or secured to prevent the premature failure of the seam due to fraying
PILLING	5
Martindale IWS196	
LIGHTFASTNESS	> 5
AS 2001.4.21	
FIRE RATINGS	
AS/NZS 1530.3	Ignitability 12
	Spread of Flame 0
	Heat Evolved 3
	Smoke Developed 5
AS/NZS 3837	BCA Group 1
	Av. Specific Extinction Area 332.3m ² /kg
Additional Fire Tests	California Bulletin 117 E, NFPA 260 (Class 1)
APPLICATION	upholstery, screens, wall panels Ideal for healthcare, hospitality, office, public building, education and residential applications

ENVIRONMENT + GREEN STAR

- Environmentally Improved Production Process: Crypton® does not contain any toxic chemicals, heavy metals, perfluorooctanoic acids (PFOAs), carcinogens or VOCs. All chemicals are recycled during the Crypton® process.
- Manufacturer has an Environmental Management System.
- Fabric manufacturer is a member of E3 (Encouraging Environmental Excellence Program).
- VIEW can be used on white furniture certified to Ecospecifier, AFRDI, ECNZ and GECA.
- The Green Star Rating Tool states “Where at least 90% of an item’s mass is certified to a GBCA recognised standard, the item can be entered as a certified product at Level A, B or C.” Therefore any fabric can be used as fabrics are almost always under 10% by weight of a furniture item.

PERFORMANCE

Crypton® is a finish and back coating treatment that provides permanent stain, moisture, odour and bacteria protection of the fabric.

Crypton® backing resists fluids from penetrating into the seat foam whilst for comfort, allows air particles to pass through the upholstery fabric.

Permanent Protection

Unlike applied coatings, topical treatments, or laminates, the Crypton® finish is engineered to penetrate right into the fabric, encapsulating every fibre. This provides permanent protection, preventing moisture, bacteria and stains from entering into fibres. This allows foreign substances to be easily removed from the fibres, which is why most soiling can simply be wiped away. No stains, fluid or bacteria will ever penetrate the fabric.

Crypton® textiles prohibit the growth of moulds like *Aspergillus Niger* and bacteria like *Staphylococcus Aureus*.

Tiered System of Defence

Crypton® Green textiles provide multiple levels of protection against microbial growth.

1. Repellancy: Each and every fibre repels both oily and water-based liquid, diminishing the likelihood of having an environment suitable for growth.
2. Cleanability: Soil and stains that serve as food sources for microorganisms are easily removed with cleaning.
3. Silver Ion Technology: Silver Ion Technology resists the growth of microbes including bacteria.
4. Permanent Integrated Moisture Barrier: The only way to ensure fabrics can be disinfected by providing protection against 'behind the scenes' contamination.

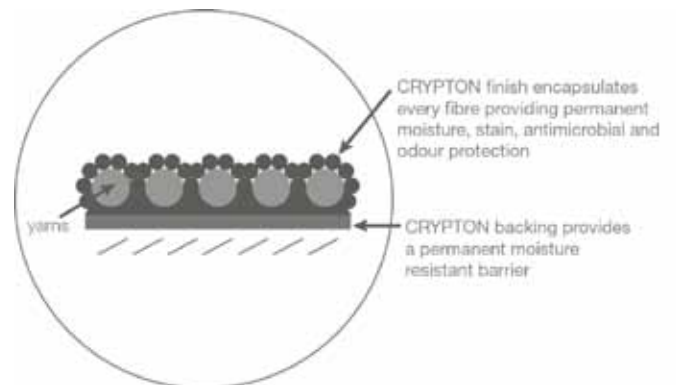
Easy to Clean and Disinfect

Crypton® textiles are easy to clean with mild powdered enzyme detergent and water so that the fabric remains clean and hygienically fresh.

Crypton® textiles are easy to disinfect with a solution of 10% bleach (sodium hypochlorite) and 90% water.

Refer to the Crypton® care instructions for full cleaning details.

Cross Section of Crypton® Fabric



Benefits for Healthcare Interiors

Crypton® textiles offer permanent moisture, odour and bacteria protection on the fabric surface as well as within the fabric, which assists in extending the useful lifetime of the fabric and furniture.

Crypton® textiles inhibit the growth of bacteria (both gram positive and gram negative), mould, mildew and fungi both on the fabric surface and within the fabric. Silver Ion Technology controls bacteria by (1) blocking oxygen-transporting enzymes, (2) preventing cell growth by inactivating proteins of the bacteria, and (3) locking the cell membranes.

Crypton® textiles are easy to clean and disinfect, therefore retaining the fabric's appearance and keeping the fabric hygienically fresh.

Benefits for Hospitality, Educational and Public Building Interiors

With the presence of food and drink, most other fabrics suffer from severe soiling, detracting from the cleanliness and appearance of the furniture. This can lead to the generation of unpleasant odours that the fabric can retain. Crypton® textiles however, are resistant to fluids penetrating the fabric, inhibiting the growth of bacteria, mould, mildew and fungi on the fabric surface and within the fabric.

Crypton® textiles are easy to clean and maintain, therefore retaining the fabric's appearance and keeping the fabric hygienically fresh.

Crypton® textiles extend the useful lifetime of the product, allowing the fabric to retain its appearance as well as be kept hygienically clean.