

TONIC

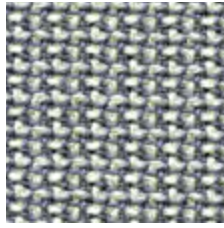
A classic and versatile
LIFE Textiles® fabric with a
refined pebble texture

INSTYLE

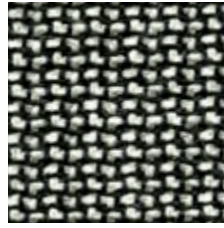
TONIC



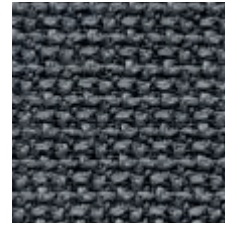
TONIC Timely



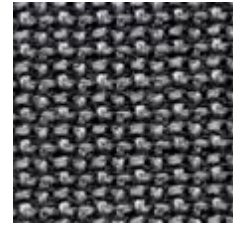
TONIC Clear



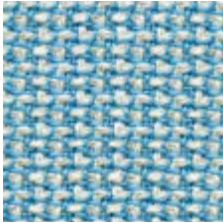
TONIC Fix



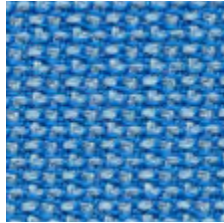
TONIC Decanter



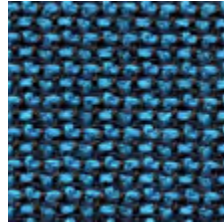
TONIC Best



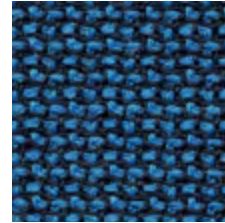
TONIC Oasis



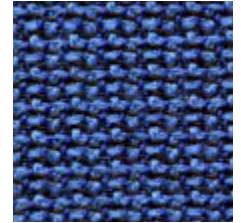
TONIC Pick Me Up



TONIC Spray



TONIC Excite



TONIC Water



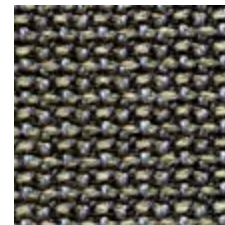
TONIC Shaken



TONIC Mix



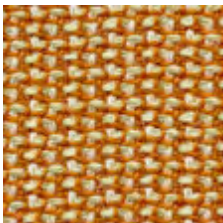
TONIC Pure



TONIC Boost



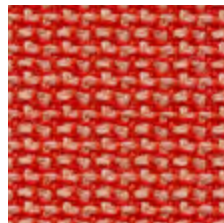
TONIC Vodka



TONIC Super



TONIC Fresh



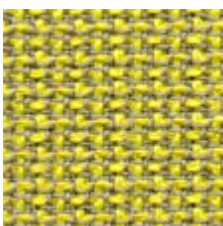
TONIC Cocktail



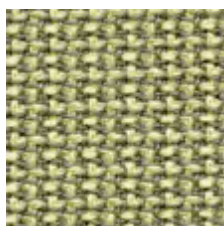
TONIC Laughter



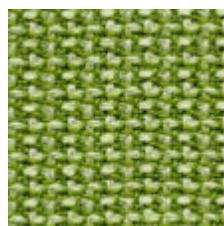
TONIC Straight Up



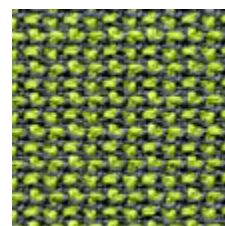
TONIC Plus Lemon



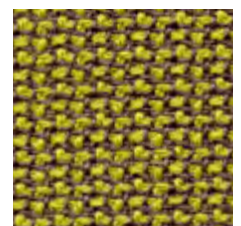
TONIC Just The



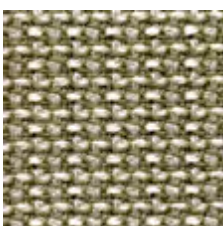
TONIC Lime



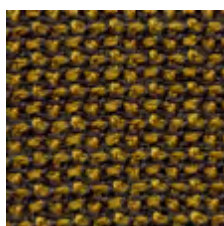
TONIC Bitters



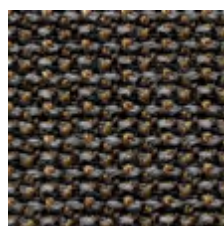
TONIC And Gin



TONIC Real



TONIC Sound



TONIC Welcome

Product may vary in colour due to the nature of the media
Please refer to website for current colour range



COMPOSITION	100% Australian worsted EthEco® wool	
WIDTH / WEIGHT	137cm / 420gsm	
PATTERN REPEAT	H 0.5cm V 0.4cm	
ROLL SIZE	50m approx.	
CARE CODE	CTA 1	
ABRASION Martindale AS2001.2.25	54,500	
CTA RATING	<div style="display: flex; align-items: center;"> <div style="background-color: #333; color: white; padding: 5px; font-weight: bold; font-size: 1.2em; margin-right: 5px;">hc</div> <div> <p>HEAVY DUTY COMMERCIAL USE</p> </div> </div>	
SEAM SLIPPAGE AS2001.2.22	<p>Warp 3.5mm Weft 5.5mm</p> <p>Note: All seams must be overlocked or secured to prevent the premature failure of the seam due to fraying</p>	
PILLING Martindale IWS196	5	
LIGHTFASTNESS ISO B05 102	Light 6-7, Med-Dark 6-7	
FIRE RATINGS AS/NZS 1530.3	Ignitability	10
	Spread of Flame	0
	Heat Evolved	0
	Smoke Developed	3
AS/NZS 3837	BCA Group 2	
	Av. Specific Extinction Area	51.8 m ² /kg
ISO 5660.1	NZBC Group 2-S	
	Av. Specific Extinction Area	49m ² /kg
IMO Resolution A.625(16)	Sections 8.2 + 8.3: Pass	
Additional Fire Tests	California 117E, ASTM E84	
APPLICATION	upholstery, screen, wall panel	
ORIGIN	Made in Australia	
PLEASE NOTE	Results from performance tests are guidelines only	

ENVIRONMENT

- 100% sustainable, rapidly renewable content: EthEco® wool is sourced from non-mulesed sheep cared for on holistically-managed farms
- Environmentally Improved Production Process: Manufactured to strict environmental criteria, reduced water and energy use, reuse of water (30%), recycling of waste, no hazardous substances
- Wool absorbs indoor air contaminants, benefiting indoor air quality
- TONIC is certified as low-VOC
- 100% biodegradable and recyclable

GREEN STAR

- TONIC can contribute points to the following Green Star criteria:
- Stewardship Programs: TONIC can be reused or recycled through our Revive recycling program
 - Low-VOC
 - TONIC can be used on white furniture certified to Ecospecifier, AFRDI, ECNZ and GECA
 - The Green Star Rating Tool states “Where at least 90% of an item’s mass is certified to a GBCA recognised standard, the item can be entered as a certified product at Level A, B or C.” Therefore any fabric can be used as fabrics are almost always under 10% by weight of a furniture item

LEED

- TONIC can contribute points to the following LEED criteria:
- Bio-Based + Rapidly-Renewable Content (100%)
 - Low-VOC
 - Extended Producer Responsibility Recycling Program

WELL

- TONIC can contribute to the following WELL criteria:
- Low VOC / VOC Reduction: TONIC is low VOC
 - Toxic Material Reduction: TONIC is free of PFCs, flame retardants, phthalates and urea formaldehyde