

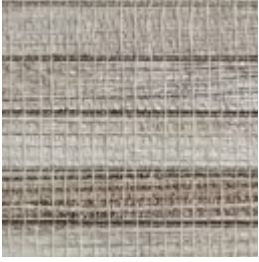
TAHITI

A harmonious textural
wallcovering with banana
bark and metallic yarn



INSTYLE

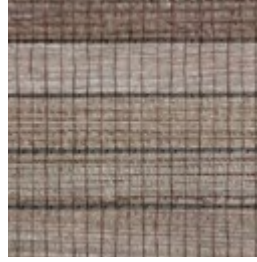
TAHITI



Anapa THI-449



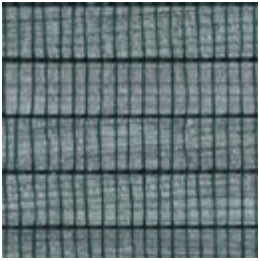
Fano THI-451



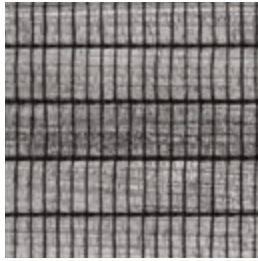
Moorea THI-452



Austral THI-454

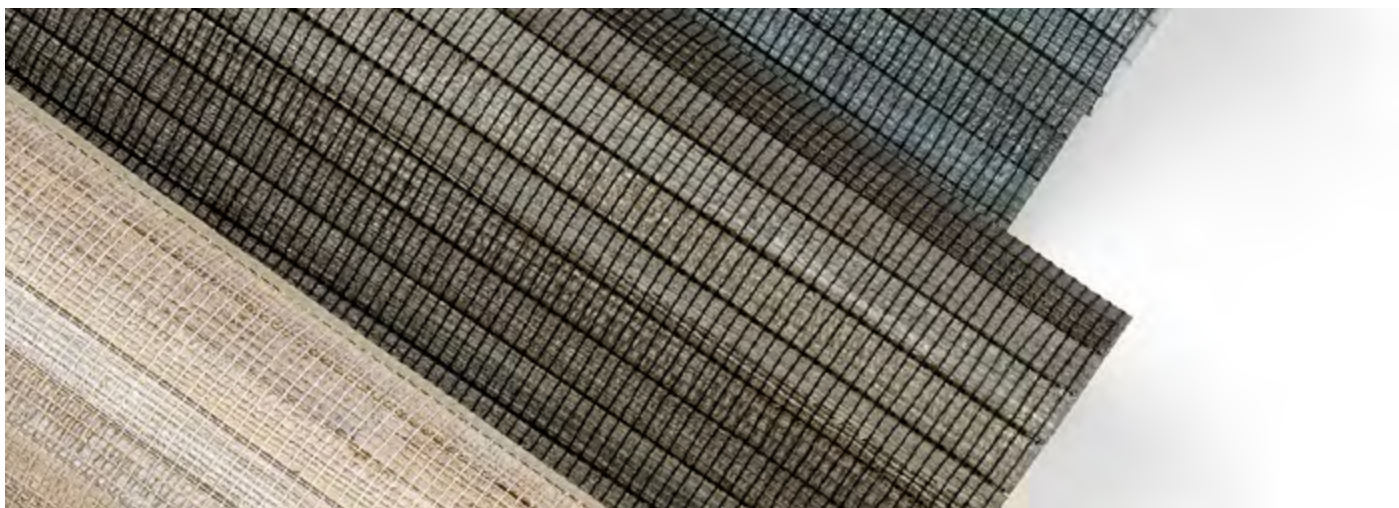


Manava THI-455



Gunmetal THI-229

Patterns shown are not to scale
Product may vary in colour due to the nature of the media
Please refer to website for current colour range



FACE COMPOSITION	banana bark, recycled paperboard with polyester and cotton yarn
BACKING TYPE	non-woven
WIDTH	91cm
WEIGHT	613gsm / 558g lineal m
PATTERN REPEAT	non-match (the horizontal stitching lines will not always align from panel to panel)
ROLL SIZE	10.9m approx. Note: minimum order quantity is 10.9m and 3.6m multiples
PERFORMANCE	Untyped Wallcovering
Additional Fire Tests	ASTM E-84 Tunnel Test Class A

NOTE

- TAHITI may exhibit variations in colour and texture. This is integral to the beauty and character of the handcrafted organic material.
- Seams may be obvious upon installation and there will be a panelling effect.

ENVIRONMENT

- TAHITI is breathable which aids in reducing mould and mildew on the wall. All inks and coatings used are water soluble and do not contain heavy metals such as chromium, cadmium, mercury or lead.
- TAHITI is woven from banana bark and recycled paperboard. Due to its natural content, it is free of heavy metals, plasticisers and fire retardant chemicals.

PRODUCT INSTALLATION

- Please refer to installation instructions for TAHITI supplied with each shipment and available on our website.
- All material must be installed in numerical sequence as cut from the roll.

CARE + MAINTENANCE

- Due to the delicate nature of the finishes, care must be taken not to damage or mark the surface due to abrasion / rubbing.
- General maintenance can be achieved with periodic dusting or vacuuming with a soft brush attachment.
- Remove ordinary dirt and smudges with a mild soap and warm water solution.
- Always test the solution on an inconspicuous portion of the wallcovering before proceeding, checking that there is no adverse effect on finish, colour or gloss.
- Care should be taken on dark colours due to the possibility of causing 'light marks'. Always use a blotting action rather than rubbing to avoid abrasion.
- Rinse thoroughly with clean water from the top down using a sponge.
- Dry with a soft lint free cloth or towel.
- Avoid alcohol / solvent based cleaners.
- TAHITI care and maintenance instructions can be downloaded from our website.

WARRANTY

- For a period of 3 years from date of invoice this wallcovering is guaranteed to be first quality and free of manufacturing defects. This warranty applies only to professionally applied installations according to the recommended installation instructions, and proper care and maintenance using appropriate cleaning agents as outlined in the care and maintenance instructions.

