

SECRET AGENT

A versatile high performance Crypton® Green textile with a rhythmic pattern.



INSTYLE

SECRET AGENT



SECRET AGENT Macadamia



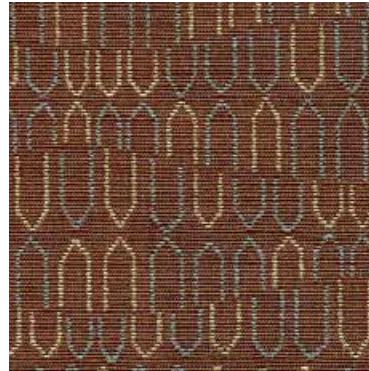
SECRET AGENT Apple



SECRET AGENT Wasabi



SECRET AGENT Khaki



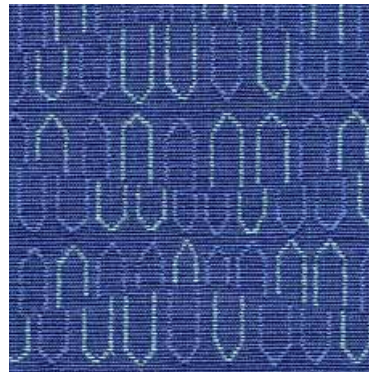
SECRET AGENT Bistre



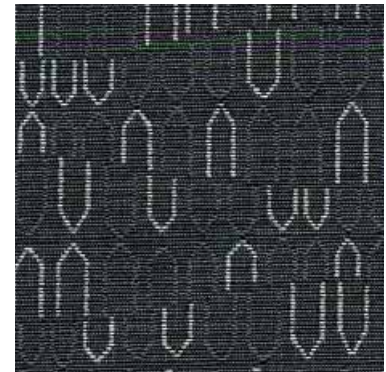
SECRET AGENT



SECRET AGENT Esky



SECRET AGENT True Blue



SECRET AGENT Pitch




SECRET AGENT Hot



SECRET AGENT Spitfire

Product may vary in colour due to the nature of the media
Patterns shown are not to scale
Please refer to website for current colour range



COMPOSITION	100% polyester (56% post-consumer recycled content) + Crypton® Green finish and backing	
WIDTH / ROLL SIZE	137cm / 55m approx.	
WEIGHT	428gsm	
PATTERN REPEAT	H 12.4cm V 17.5cm	
CARE CODE	Crypton	
ABRASION	70,000 double rubs 40,000	
Wyzenbeek ASTM 4157		
Martindale AS2001.2.25		
CTA RATING	 HEAVY DUTY COMMERCIAL USE	
SEAM SLIPPAGE	Warp 2.2mm Weft 2.0mm	
AS2001.2.22		
PILLING	5	
Martindale IWS196		
LIGHTFASTNESS	5 (min)	
ISO 105-B02		
WATER REPELLENCY	Rating 90	
AATCC 22-2005 spray test		
FIRE RATINGS		
AS/NZS 1530.3	Ignitability	14
	Spread of Flame	0
	Heat Evolved	2
	Smoke Developed	5
AS/NZS 3837	BCA Group 2	
	Av. Specific Extinction Area	399.7 m2/kg
APPLICATION	upholstery, screens, wall panelling Ideal for healthcare, hospitality, office, public building, education and residential applications	

ENVIRONMENT

- Contains 56% post-consumer recycled content.
- Environmentally Improved Production Process: Crypton® Green does not contain any toxic chemicals, heavy metals, perfluorooctanoic acids (PFOAs), carcinogens or VOCs. All chemicals are recycled during the Crypton® Green process. Manufacturer has an Environmental Management System.
- Gold Indoor Advantage™ Certified by Scientific Certification Systems as low-VOC. Test certificate available on request.
- The manufacturer is a member of E3 (Encouraging Environmental Excellence Program) and operates an Environmental Management System.

GREEN STAR + LEED

- SECRET AGENT can be used on white furniture certified to Ecospecifier, AFRDI, ECNZ and GECA.
- The Green Star Rating Tool states “Where at least 90% of an item’s mass is certified to a GBCA recognised standard, the item can be entered as a certified product at Level A, B or C.” Therefore any fabric can be used as fabrics are almost always under 10% by weight of a furniture item.
- LEED: 56% post consumer content contributes to LEED MR Credit 4 Recycled Content.

PERFORMANCE

Crypton® Green fabrics contain a minimum of 50% post-consumer recycled polyester. Post-Consumer refers to the recycling of materials generated from residential and consumer waste for use in new or similar purposes, such as converting wastepaper from offices into boxes or plastic bottles into polyester fibre.

Crypton® Green is a finish and back coating treatment that provides permanent stain, moisture, odour and bacteria protection of the fabric.

Crypton® Green backing resists fluids from penetrating into the seat foam whilst for comfort, allows air particles to pass through the upholstery fabric.

Permanent Protection

Unlike applied coatings, topical treatments, or laminates, the Crypton® Green finish is engineered to penetrate right into the fabric, encapsulating every fibre. This provides permanent protection, preventing moisture, bacteria and stains from entering into fibres. This allows foreign substances to be easily removed from the fibres, which is why most soiling can simply be wiped away. No stains, fluid or bacteria will ever penetrate the fabric.

Crypton® Green textiles prohibit the growth of moulds like *Aspergillus Niger* and bacteria like *Staphylococcus Aureus*.

Tiered System of Defence

Crypton® Green textiles provide multiple levels of protection against microbial growth.

1. Repellancy: Each and every fibre repels both oily and water-based liquid, diminishing the likelihood of having an environment suitable for growth.
2. Cleanability: Soil and stains that serve as food sources for microorganisms are easily removed with cleaning.
3. Silver Ion Technology: Silver Ion Technology resists the growth of microbes including bacteria.
4. Permanent Integrated Moisture Barrier: The only way to ensure fabrics can be disinfected by providing protection against 'behind the scenes' contamination.

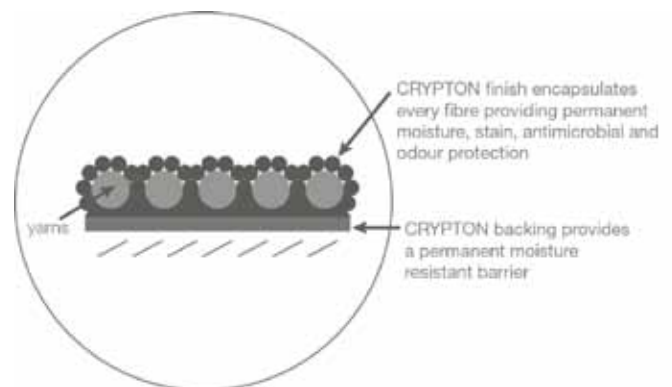
Easy to Clean and Disinfect

Crypton® Green textiles are easy to clean with mild powdered enzyme detergent and water so that the fabric remains clean and hygienically fresh.

Crypton® Green textiles are easy to disinfect with a solution of 10% bleach (sodium hypochlorite) and 90% water.

Refer to the Crypton® Green care instructions for full cleaning details.

Cross Section of Crypton® Fabric



Benefits for Healthcare Interiors

Crypton® Green textiles offer permanent moisture, odour and bacteria protection on the fabric surface as well as within the fabric, which assists in extending the useful lifetime of the fabric and furniture.

Crypton® Green textiles inhibit the growth of bacteria (both gram positive and gram negative), mould, mildew and fungi both on the fabric surface and within the fabric. Silver Ion Technology controls bacteria by (1) blocking oxygen-transporting enzymes, (2) preventing cell growth by inactivating proteins of the bacteria, and (3) locking the cell membranes.

Crypton® Green textiles are easy to clean and disinfect, therefore retaining the fabric's appearance and keeping the fabric hygienically fresh.

Benefits for Hospitality, Educational and Public Building Interiors

With the presence of food and drink, most other fabrics suffer from severe soiling, detracting from the cleanliness and appearance of the furniture. This can lead to the generation of unpleasant odours that the fabric can retain. Crypton® Green textiles however, are resistant to fluids penetrating the fabric, inhibiting the growth of bacteria, mould, mildew and fungi on the fabric surface and within the fabric.

Crypton® Green textiles are easy to clean and maintain, therefore retaining the fabric's appearance and keeping the fabric hygienically fresh.

Crypton® Green textiles extend the useful lifetime of the product, allowing the fabric to retain its appearance as well as be kept hygienically clean.