



PULSE

—

An elegant LIFE Textiles®
pattern with a twist on the
classic herringbone

INSTYLE

PULSE



PULSE Even



PULSE Rhythm



PULSE Rate



PULSE Regular



PULSE High



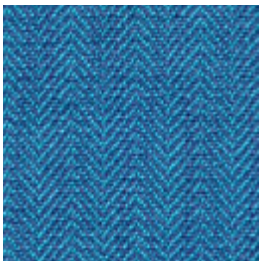
PULSE Fit



PULSE Lift



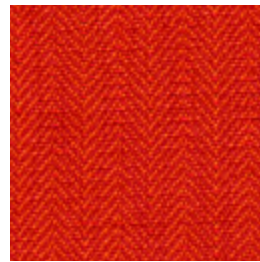
PULSE Beat



PULSE Quickly



PULSE Flow



PULSE Healthy



PULSE Ating



PULSE Trend

Product may vary in colour due to the nature of the media
Patterns shown are not to scale
Please refer to website for current colour range



COMPOSITION	100% Australian worsted EthEco® wool	
WIDTH / WEIGHT	137cm / 360gsm	
PATTERN REPEAT	H 1.5cm V 7.1cm	
ROLL SIZE	50m approx.	
CARE CODE	CTA 1	
ABRASION Martindale AS2001.2.25	59,250	
CTA RATING	<div style="display: flex; align-items: center;"> <div style="background-color: #333; color: white; padding: 5px; font-weight: bold; font-size: 1.2em; margin-right: 10px;">hc</div> <div> <p>HEAVY DUTY COMMERCIAL USE</p> </div> </div>	
SEAM SLIPPAGE AS2001.2.22	Warp 7.0mm Weft 7.0mm Note: All seams must be overlocked or secured to prevent the premature failure of the seam due to fraying	
PILLING Martindale IWS196	5	
LIGHTFASTNESS ISO B05 102	Light 6-7, Med-Dark 6-7	
FIRE RATINGS AS/NZS 1530.3	Ignitability	10
	Spread of Flame	0
	Heat Evolved	0
	Smoke Developed	3
AS/NZS 3837	BCA Group 2 Av. Specific Extinction Area 111.2m2/kg	
IMO Resolution A.652(16)	Sections 8.2 + 8.3: Pass	
Additional Fire Tests	California 117E, ASTM E84	
APPLICATION	upholstery, screens, wall panels	
ORIGIN	Australia	
PLEASE NOTE	Results from performance tests are guidelines only	

ENVIRONMENT

- 100% sustainable, rapidly renewable content: EthEco® wool is sourced from non-mulesed sheep cared for on holistically-managed farms
- Manufactured to strict environmental criteria (LIFE Textiles® specification)
- Environmentally Improved Production Process: reduced water and energy use, reuse of water (30%), recycling of waste, no hazardous substances
- Wool absorbs indoor air contaminants, benefiting indoor air quality
- PULSE is certified as low-VOC
- 100% biodegradable and recyclable

GREEN STAR

- PULSE can contribute points to the following Green Star criteria:
- Stewardship Programs: PULSE can be reused or recycled through our Revive recycling program
 - Low-VOC
 - PULSE can be used on white furniture certified to Ecospecifier, AFRDI, ECNZ and GECA
 - The Green Star Rating Tool states “Where at least 90% of an item’s mass is certified to a GBCA recognised standard, the item can be entered as a certified product at Level A, B or C.” Therefore any fabric can be used as fabrics are almost always under 10% by weight of a furniture item

LEED

- PULSE can contribute points to the following LEED criteria:
- Bio-Based + Rapidly-Renewable Content (100%)
 - Low-VOC
 - Extended Producer Responsibility Recycling Program

WELL

- PULSE can contribute to the following WELL criteria:
- Low VOC / VOC Reduction: PULSE is low VOC
 - Toxic Material Reduction: PULSE is free of PFCs, flame retardants, phthalates and urea formaldehyde