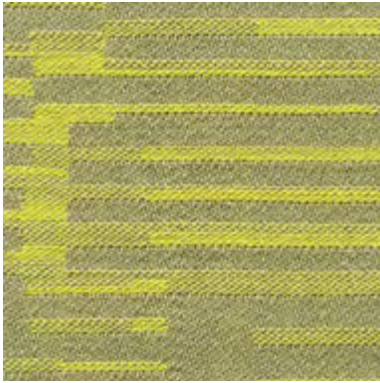


PRESS

A subtle linear and tonal
LIFE Textiles® pattern
inspired by light and shadow

INSTYLE

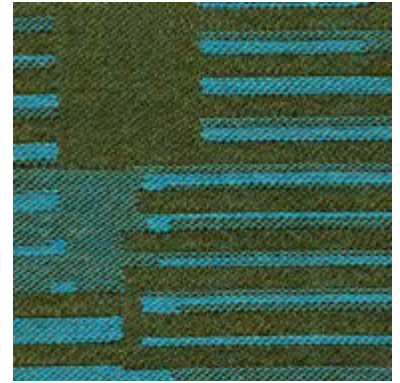
PRESS



PRESS Play



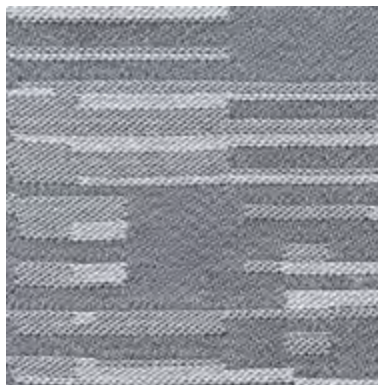
PRESS Go



PRESS Button



PRESS Release



PRESS Club

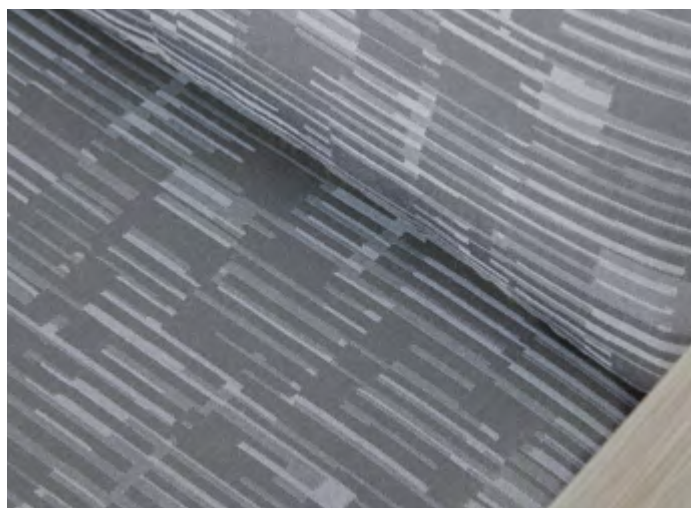
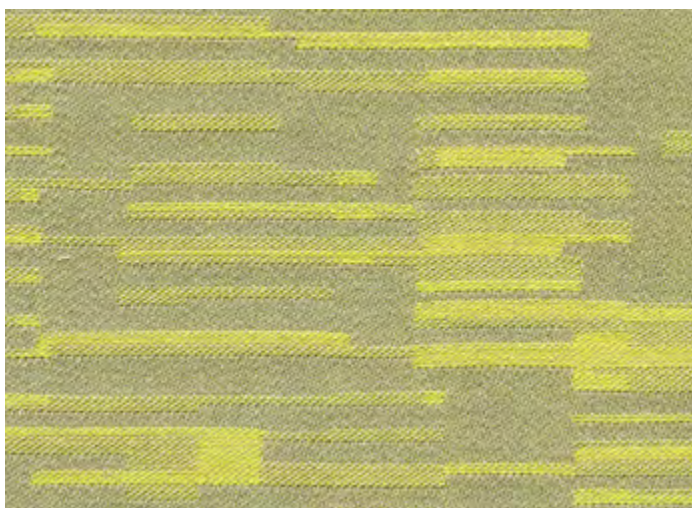


PRESS Print



PRESS Out

Product may vary in colour due to the nature of the media
Patterns shown are not to scale
Please refer to website for current colour range



COMPOSITION	100% Australian worsted EthEco® wool
WIDTH / ROLL SIZE	137cm / 50m approx.
WEIGHT	340gsm
PATTERN REPEAT	H 35.3cm V 53.7cm
CARE CODE	CTA 1
ABRASION	
Wyzenbeek ASTM 4157	95,000 double rubs
Martindale AS2001.2.25	40,250
CTA RATING	hc HEAVY DUTY COMMERCIAL USE
SEAM SLIPPAGE	Warp 5.0mm Weft 4.5mm
AS2001.2.22	Note: All seams must be overlocked or secured to prevent the premature failure of the seam due to fraying
PILLING	4-5
Martindale IWS196	
LIGHTFASTNESS	> 5
ISO 105-B02	
FIRE RATINGS	
AS/NZS 1530.3	Ignitability 12
	Spread of Flame 0
	Heat Evolved 0
	Smoke Developed 4
AS/NZS 3837	BCA Group 2
	Av. Specific Extinction Area 85.9m2/kg
IMO A.652(16)	Sections 8.2 + 8.3: Pass
Additional Fire Tests	California Bulletin 117 E, ASTM E-84
APPLICATION	upholstery, screens

ENVIRONMENT

- 100% sustainable, rapidly renewable content: EthEco® wool is sourced from non-mulesed sheep cared for on holistically-managed farms.
- Environmentally Improved Production Process: Manufactured to strict environmental criteria, reduced water and energy use, reuse of water (30%), recycling of waste, no hazardous substances.
- Wool absorbs indoor air contaminants, benefiting indoor air quality.
- Certified as low-VOC. Test certificate available on request.
- 100% biodegradable and recyclable

GREEN STAR + LEED

- PRESS is certified to the EU Ecolabel.
- PRESS can be used on white furniture certified to Ecospecifier, AFRDI, ECNZ and GECA.
- The Green Star Rating Tool states “Where at least 90% of an item’s mass is certified to a GBCA recognised standard, the item can be entered as a certified product at Level A, B or C.” Therefore any fabric can be used as fabrics are almost always under 10% by weight of a furniture item.
- 100% rapidly renewable content contributes to LEED MR Credit 6 Rapidly Renewable Materials.



EU Ecolabel: UK/16/009

