

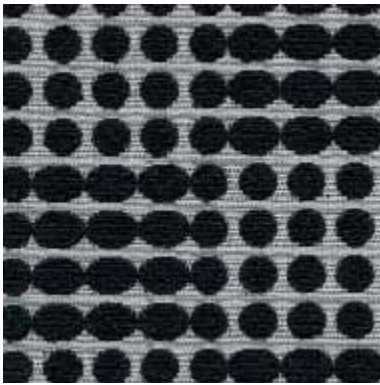
BLINK

Designed by Ilias, a contemporary high impact 3D textile that invites touch.

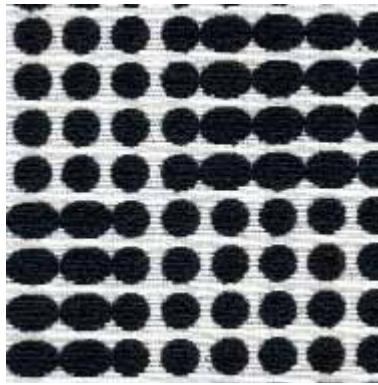


INSTYLE

BLINK



BLINK First



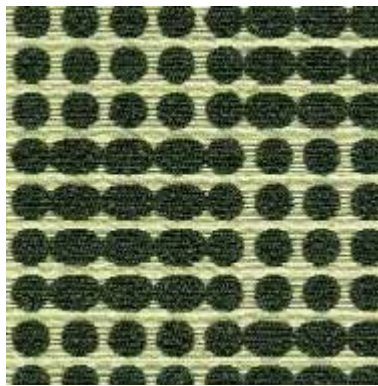
BLINK Of An Eye



BLINK Wink



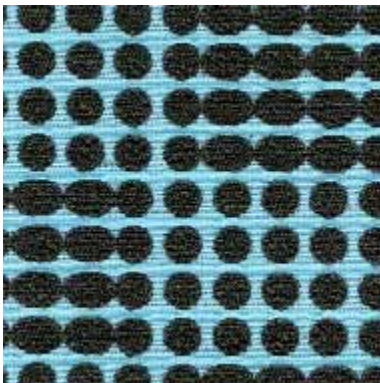
BLINK Ers



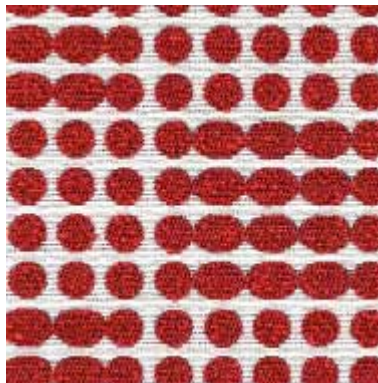
BLINK Twice



BLINK And You Miss It



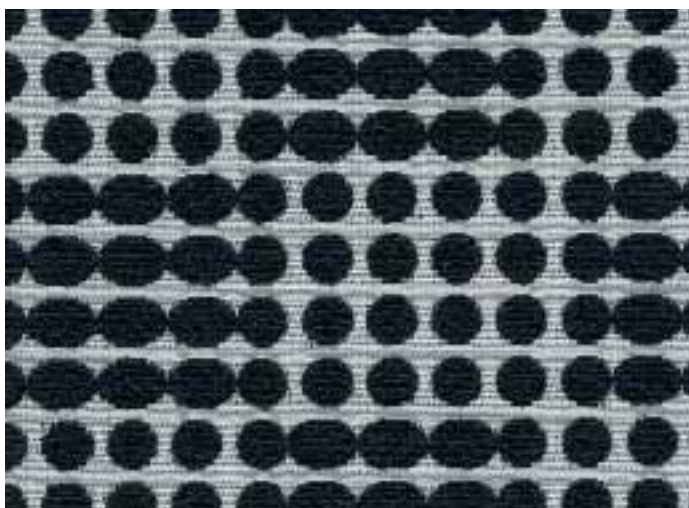
BLINK Awake




BLINK Quickly

Patterns shown are not to scale
Product may vary in colour due to the nature of the media
Please refer to website for current colour range

BLINK by Ilias



COMPOSITION	61% cotton, 39% nylon
WIDTH	137cm
WEIGHT	384gsm
PATTERN REPEAT	H 7.5cm V 6.3cm
ROLL SIZE	55m approx.
CARE CODE	CTA 1
ABRASION Wyzenbeek ASTM 4157 Martindale AS2001.2.25	100,000 double rubs 31,000
CTA RATING	 GENERAL COMMERCIAL USE
SEAM SLIPPAGE AS2001.2.22	Warp 2.2mm Weft 2.3mm Note: All seams must be overlapped or secured to prevent the premature failure of the seam due to fraying
PILLING Martindale IWS196	5
LIGHTFASTNESS ISO 105 B02	>6
FIRE RATINGS AS/NZS 1530.3	Ignitability 8 Spread of Flame 0 Heat Evolved 2 Smoke Developed 4
AS/NZS 3837 (Cone Calorimeter)	BCA Group 2 Av. Specific Extinction Area 101.2m ² /kg
APPLICATION	upholstery, screens, wall panels

ENVIRONMENT

- 61% rapidly-renewable content (cotton).
- Environmentally Improved Production Process: reduced energy consumption, reuse and recycling of waste, and use of environmentally optimised dyes.
- The manufacturer has an environmental policy.
- Cotton absorbs prevalent indoor air contaminants therefore benefiting indoor air quality.
- Reusable and 61% biodegradable (natural fibre content).

GREEN STAR + LEED

- BLINK can be used on white furniture certified to Ecospecifier, AFRDI, GECA and ECNZ.
- The Green Star Rating Tool states “Where at least 90% of an item’s mass is certified to a GBCA recognised standard, the item can be entered as a certified product at Level A, B or C.” Therefore any fabric can be used as fabrics are almost always under 10% by weight of a furniture item.
- 61% rapidly renewable content contributes to LEED MR Credit 6 Rapidly Renewable Materials.